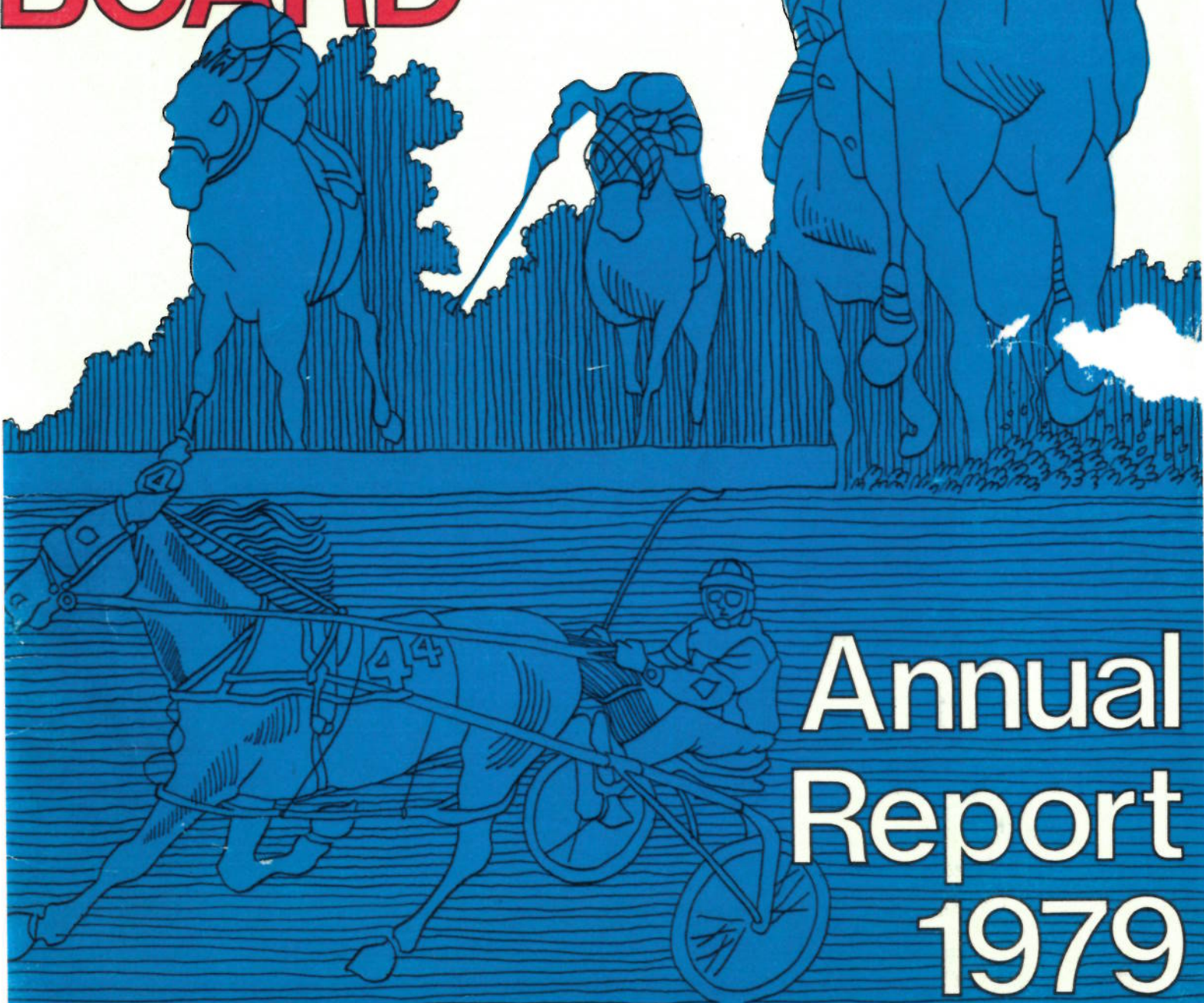


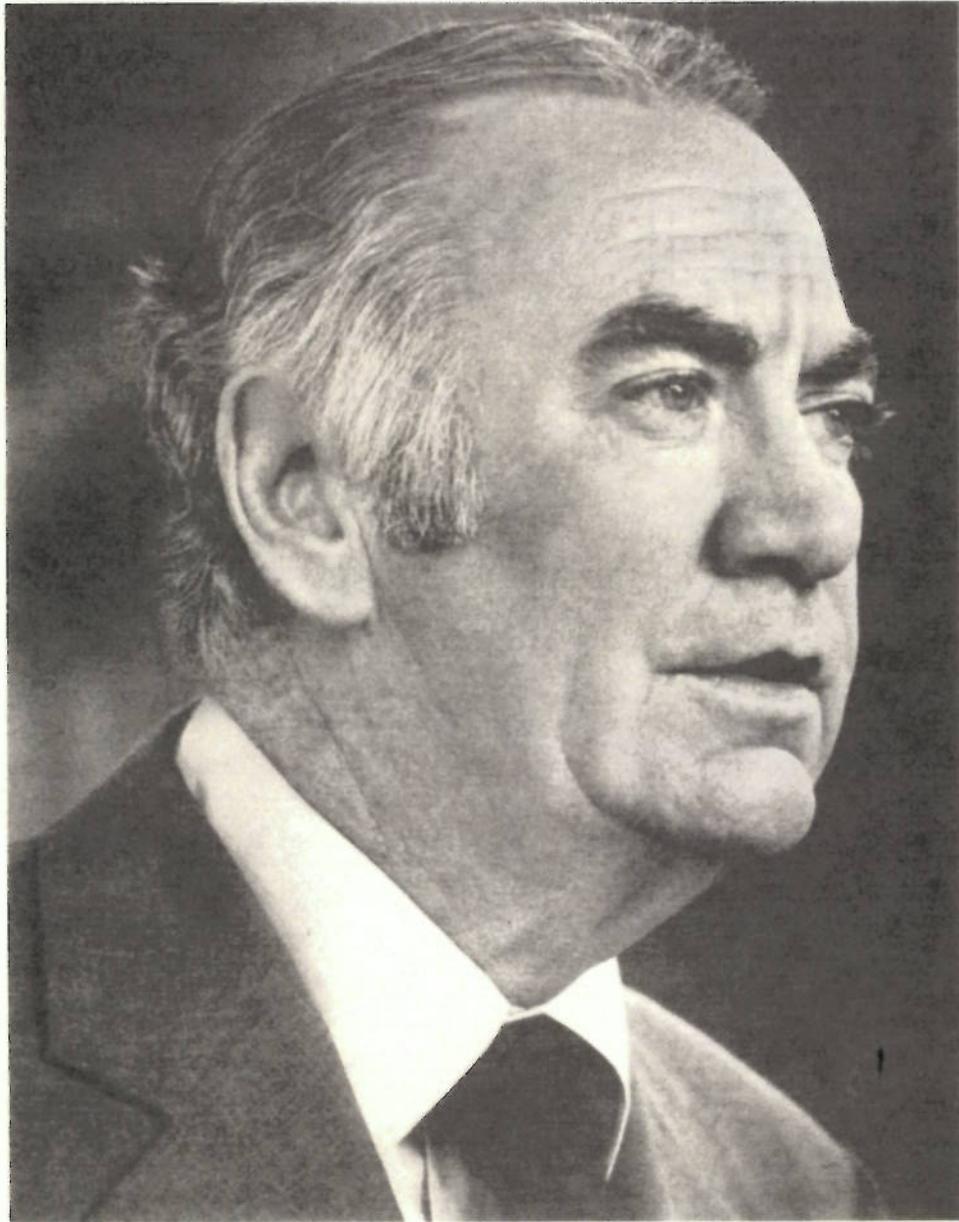
# NEW YORK STATE RACING & WAGERING BOARD



Annual  
Report  
1979

NEW YORK STATE  
RACING &  
WAGERING  
BOARD

Annual  
Report  
1979



GOVERNOR HUGH L. CAREY



STATE OF NEW YORK  
NEW YORK STATE RACING AND WAGERING BOARD

Two World Trade Center

New York, N. Y. 10047

(212) 488-4684

MEMBERS

John Van Lindt  
Chairman  
Joseph C. O'Dea  
Bertram D. Sarafan

To the Honorable Hugh L. Carey, Governor:

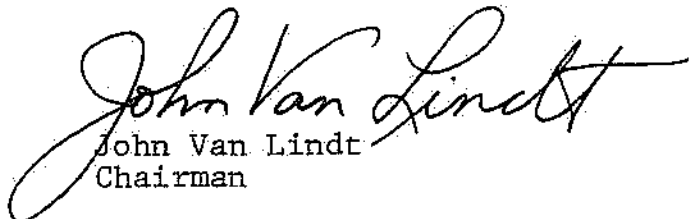
This is the seventh annual report of the New York State Racing and Wagering Board, submitted to you in accordance with Chapter 346 of the Laws of 1973, and my first to you as Chairman.

In spite of 52 fewer racing days, a prolonged strike of the pari-mutuel clerks at the New York Racing Association, and a nationally slumping economy, we are pleased to report another record handle, on- and off-track, of \$2,962,272,995. At the same time, however, attendance at New York tracks failed to reach last year's mark, declining by 6.83% to a total of 11,758,084. Pari-mutuel racing revenue of \$231,308,248 was provided to the State, municipalities and counties, of which \$113,111,466 came from the various off-track betting operations.

In the following text, we have more fully commented on the Board's regulatory activities in the conduct of pari-mutuel racing and wagering, bingo and games of chance.

Finally let me note that in the past year racing has seen some very difficult days in terms of bad publicity and labor disputes. Your personal support, and that of your staff, has meant a great deal to all of us involved in pari-mutuel regulation. Please accept our sincerest thanks.

Respectfully submitted,

  
John Van Lindt  
Chairman

## CONTENTS

REVIEW	5
THOROUGHBRED RACING	8
HARNESS RACING	10
QUARTER HORSE RACING	11
OFF-TRACK BETTING	11
BINGO	12
GAMES OF CHANCE	12
FINANCIAL STATEMENTS	13
THOROUGHBRED HARNESS AND QUARTER HORSE —	
Combined Revenue to New York State	14
Highlights	15
Revenue to New York State	16
Summary of Commission and Breakage	17
Summary of Handle and Attendance	18
Thoroughbred Statistics	19
Comparison of Handle & Attendance	20
Harness Racing Statistics	21
Summary of Changes	23
OFF-TRACK BETTING —	
Handle by Tracks and Region	25
Revenues	26
Revenue to OTB Cities and Counties	27
Revenues by Corporation	28
Distribution of Surcharge Monies	29
Year End Statistics	30
Fingerlakes Handle	31
Roosevelt Handle	32
Yonkers Handle	33
Batavia, Buffalo, and Saratoga Handle	34
Monticello and Vernon Downs Handle	35
Out-of State	36
Special Events	37
Handle by Wager - Thoroughbred	38
Handle by Wager - Harness	39
Handle by Wager - Out-of-State	41
Commission and Breakage	43
Thoroughbred & Harness Breeder's Funds	44
Purse Parity Payments	45
Summary	46
OTB Betting in Connecticut	47
RACING AND WAGERING BOARD STAFF	Inside Back Cover

## REVIEW

Although the racing industry in New York State mirrored the generally adverse economic trend of the country, there were also some bright spots in 1979 racing statistics. Average daily handle was up 5.27% and total handle at all tracks reached a record \$1,590,246,285, an increase of 1.91% over 1978 in spite of 52 fewer racing days in 1979 and a 46-day strike of the New York Racing Association's pari-mutuel clerks during which both handle and attendance dropped precipitously. Overall, however, the combined on- and off-track wagering in New York State broke all previous records and reached a new high of \$2,962,272,995.

Average daily attendance at all New York tracks combined fell 3.76%. (Of all the tracks, only the Saratoga thoroughbred race track showed a slight increase in average daily attendance.)

However, for the 11,758,084 racing fans who did go through the turnstiles in 1979, New York tracks provided the kind of excitement that has earned the State its reputation as the premier showplace of horse racing in the country. *Affirmed* again showed his championship quality at Belmont in the Jockey Club Gold Cup, the race of the year, defeating *Spectacular Bid*, and earning Horse-of-the-Year honors for the second time in two years. "The Bid", after victories in the Kentucky Derby and Preakness, capped his 1979 accomplishments with a sensational triumph in the Marlboro Cup, winning by five lengths over older horses and reaching an all-time earnings record for one year of \$1,279,334.

The super-star of harness racing in 1979 was unquestionably two-year-old Horse-of-the-Year, *Niatross*, undefeated in 13 out of 13 races entered, four of them at

Vernon Downs. New York bred colts and fillies, too, earned special honors and their full share of purses: New York bred *Cranford* gained her title as Two-Year-Old Trotting Filly of the Year, and top earnings of \$139,045, while another New York bred, *Happy Motoring*, took the Cane Pace, the first leg of the Triple Crown of Pacing, at Yonkers in 1:57.3, boosting his total 1979 earnings to \$411,421.

As the only state with off-track as well as on-track pari-mutuel wagering on horse races, New York shares in the revenue from both these sources. Total handle from off-track betting in 1979 reached a new high of \$1,372,026,710, an extraordinary increase of 13.7% over the previous year.

The total number of racing days decreased in 1979 from 1,659 in 1978, to 1,607 due mainly to the absence of quarter horse racing in New York in 1979. (There were 24 quarter horse racing days in the 1978 schedule.) Following are the sources of revenue to the state from pari-mutuel wagering:

Revenue to the State	
Thoroughbred Racing	\$ 37,897,794.
Harness Racing	47,851,864.
Quarter Horse (Uncashed 1978 tickets)	3,752.
OTB (Including Conn. OTB)	30,904,081.
	<hr/>
	\$116,657,491.

Total revenue to the State, municipalities and counties from on- and off-track betting amounted to \$231,308,248.

A decrease in revenue to the State from thoroughbred racing is due in part to 1978 legislation (effective on August 1, 1978) reducing the take-out on pari-mutuel betting at New York Racing Association tracks from 17% to 14%, and lowering the State's share by 3% during all of 1979.

On June 25, 1979, a federal court challenge to the Board's powers was resolved by the Supreme Court of the United States. In a case involving the drugging of a harness horse at Monticello Raceway, the Supreme Court in *Barry v. Barchi*, 90 S.Ct. 2642, held that the Board is constitutionally empowered to suspend a trainer's license upon discovery of a drugging even before a hearing is held as long as a hearing is scheduled and held promptly thereafter. The Court, in addition, approved the Board's rule which holds the horse's trainer responsible for the condition of the horse. This landmark case affirmed the use of the broad regulatory tools which are necessary to insure the integrity of pari-mutuel racing.

### Equine Drug Testing Program

Already the leader in its drug testing methods, New York again took the initiative in this area by inaugurating pre-race testing at Finger Lakes Race Track in July, 1979. Thus, New York became the first state to require routine pre-race testing in the thoroughbred industry. Testing facilities were installed at the track, and after the start-up date in July, any horses found to have an identifiable foreign substance in their systems were scratched from the racing card.

Pre-race testing will be extended to the New York Racing Association tracks in 1980.

At the major harness tracks, both pre-and post-race testing have been in effect since 1972. During 1979, 93,779 pre-race samples and 61,798 post-race samples were tested resulting in 57 pre-race and 70 post-race drug positives.

### Licensing

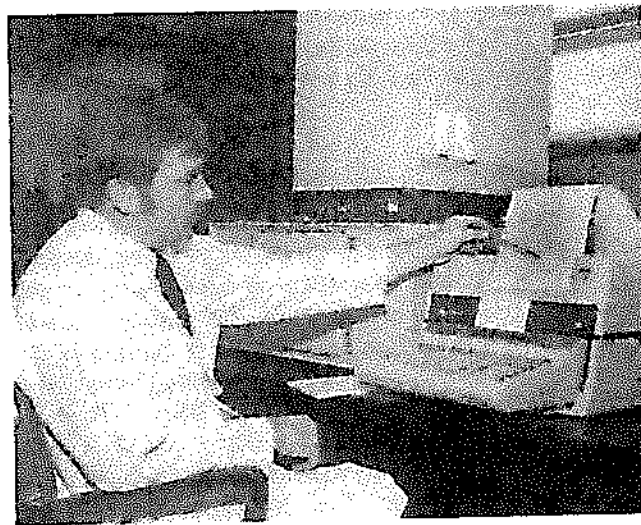
The Board issued a total of 26,261 licenses, of which 17,481 were in harness racing and 8,780 were for the

thoroughbred tracks. (There was no quarter horse racing in New York during 1979.)

To streamline the processing of annual licenses in 1979, a mobile licensing team was organized which travelled to each track at the start of its meet to handle licenses on the site.

Portable computer terminals were installed this year at all thoroughbred and the major harness tracks to provide each track with the capability of checking racing participants and receiving pertinent licensing information from all racing jurisdictions in the United States and Canada. By the use of the terminal and high speed printer, the Board is able to retrieve important data relating to licensees, fines, suspensions and other commission actions from all states which have pari-mutuel wagering.

This program will be expanded in 1980 to include all the harness tracks in New York State. Future plans also call for the introduction of computer based electronic processing of license renewals.



Richard Sheasley, a Forensic Chemist and Director of the laboratory at Finger Lakes Race Track, reads a print-out from the gas liquid chromatograph/mass spectrometer.

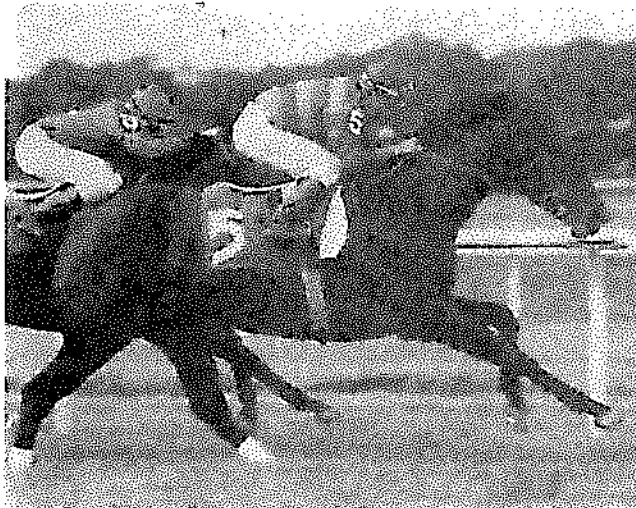
## Investigations

The Board's emphasis on enhancing its investigative capabilities was implemented during the year by the addition of professionally qualified personnel with law enforcement backgrounds. Currently, the staff includes two former FBI agents, three former New York City Police Department detectives, and an ex-FBI Agent assigned to the New York Racing Association tracks. All Seasonal Investigators at the other tracks also have extensive law enforcement backgrounds from various local police departments, sheriff's offices, State Police, or the FBI.

During the year a "strike force" concept was inaugurated, enabling this department to send highly skilled investigators throughout the State as needed to handle the major investigations.

This section was involved in a total of 271 major investigations, 122 of which concerned the medication and drugging of horses.

Investigations in 1979 resulted in 41 fines and 75 suspensions in thoroughbred racing, and 353 fines and 420 suspensions at the harness tracks.



New York Bred Horse-of-the-Year SWEET WOOD-RUFF captures the Kingston Handicap, at Belmont Park. (6/13/79)

## Audits

The first comprehensive management report on the operations of each of the seven harness tracks and Finger Lakes Race Course was completed and submitted to the Governor and the Legislature, together with a separate audit report on the harness tracks. These reports, mandated by the Laws of 1977, Chapter 267, are being used by the Board to establish objective criteria in its supervision of track facilities and racing programs. They will also be useful reference for the Governor and the Legislature in their deliberations on problems affecting New York horse racing.

Under the 1978 legislation (Laws of 1978, Chapter 576) reducing the State's commission on regular betting at New York Racing Association tracks from 5% to 2%, the Board was required to report the results of the lowered take-out, including its impact on attendance and handle and other aspects of thoroughbred and standard-bred racing and wagering.

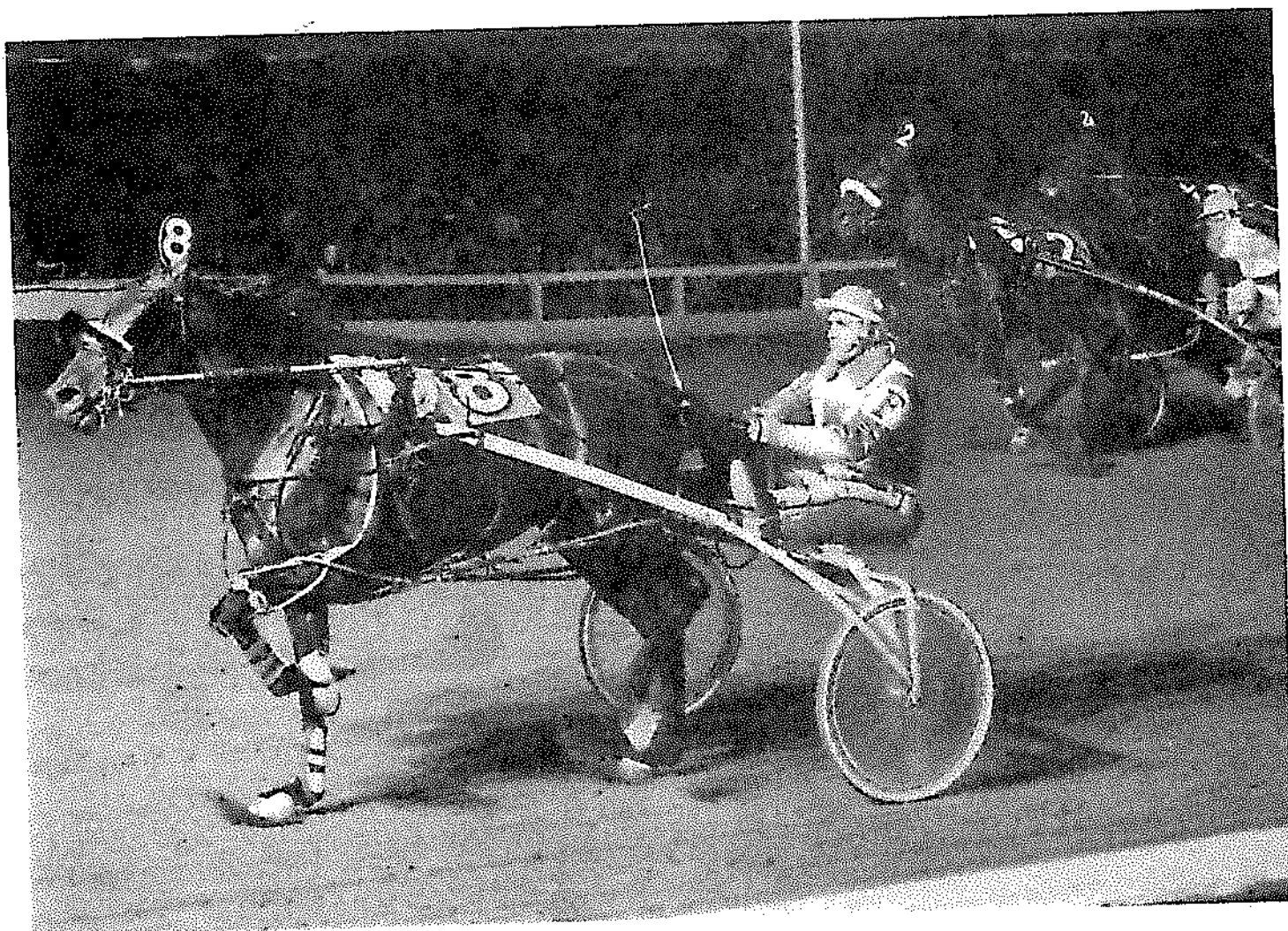
The Board commissioned New York University to examine the problem and by computer analysis compare data from the test period, July 31, 1978 to July 30, 1979, with that of previous years. Several unpredictable events compounded the problems of evaluation: a seven-week strike of pari-mutuel clerks at Aqueduct; three extra quinella pools and a second daily double pool for N.Y.R.A. bettors and off-track betting customers beginning in different stages; betting closer to post time and live audio calls of N.Y.R.A. races in OTB outlets; the installation of a new pari-mutuel system at N.Y.R.A. tracks in May, as well as the gasoline shortage in the spring of 1979. All this was weighed in the report's conclusions.

In comparing the test period with the same period of the year previous, it was found that total and average daily betting at N.Y.R.A., at Yonkers and Roosevelt Raceways, and at New York City, Nassau and Suffolk Off-Track Betting regions showed an increase. New York Racing Association tracks were up in total attendance and in average per diem attendance until the strike. At Roosevelt and Yonkers Raceways, the change in attendance was minimal.



As a result, the Board recommended that the reduction in take-out be extended for another year and the study of the experiment continue for at least that period.

Attendance, however, failed to show the same improvement: New York Racing Association tracks' attendance fell 4.18%, largely the result of the strike of parimutuel clerks at Aqueduct and unfavorable weather on weekends



Henri Fillon drives HOT HITTER to an easy finish in the \$180,225 Messenger Stakes at Roosevelt Raceway. HOT HITTER's single season earnings of \$821,491 in 1979 was a harness racing record.

### Thoroughbred Racing

New York's thoroughbred tracks set a new record high in total handle for the year of \$907,694,330, an increase of 4.11% over 1978.

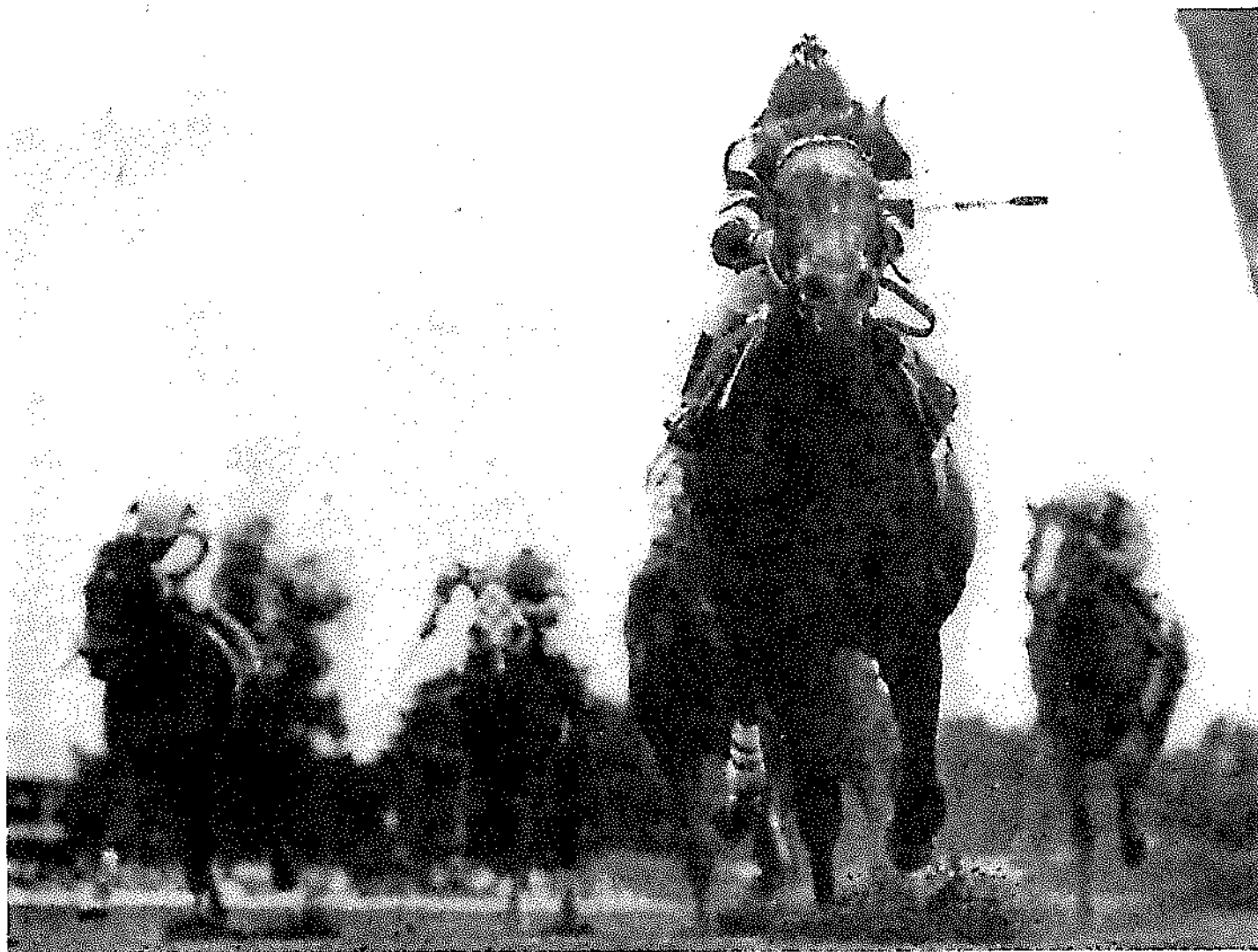
during the winter months. (Saratoga alone of the thoroughbred tracks increased attendance by 2.13%, and handle rose 12.78% over 1978).

Finger Lakes ended the year with decreases in both handle and attendance, down 5.45% in handle, and 12.30% in attendance.

With the start of the Saratoga meet on August 1st, parity between available purse money from both on- and off-track betting was reached. OTB corporations from that date contributed 3 percent of their handle on win, place, show, quinella, exacta, and daily double wagering, and 4 percent of triple handle for purses.

Also, as provided for in legislation (Laws of 1978, Chapter 576) beginning on January 1, 1979, the New York Racing Association added three quinellas and a second daily double to the daily racing program.

There were changes again this year in the New York State Thoroughbred Breeding & Development Fund's share of the handle on- and off-track, which went from 0.30% to 0.40%, increasing the total amount to be distributed by the fund from \$5,782,300 in 1979 to an estimated \$7,331,700 in 1980. To generate these new funds



SPECTACULAR BID, on his way to a five-length win over GENERAL ASSEMBLY and COASTAL in the Marlboro Cup handicap, at Belmont Park, September 8, 1979.

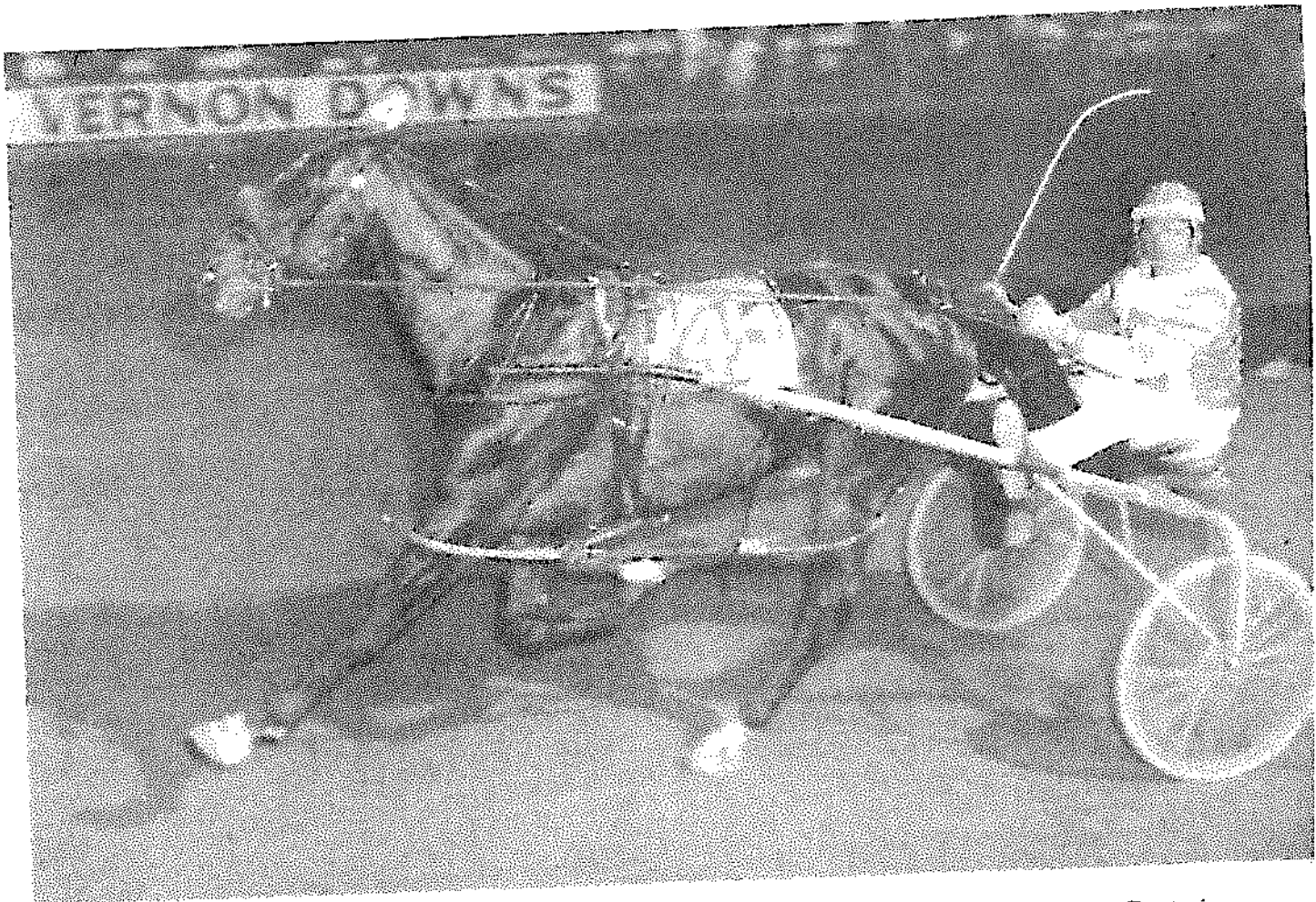
for the breeders, both N.Y.R.A.'s and OTB's share of the handle decreased proportionately, and by 1981, the Fund's share will reach 0.50%.

Other measures of the dramatic growth of the thoroughbred breeding industry in New York are apparent in yearling purchases which reached \$2.3 million in 1979; in the increased number of New York breds, 1,000 this year; in the greater number of races for New York breds at the major tracks, 207 races in 1979; in stallion and breeder awards amounting to \$2,431,682; and finally, in the \$2,544,000 distributed in purses for New York breds this year.

New York bred "Horse-of-the-Year", *Sweet Woodruff*, distinguished himself in open competition as well as against New York breds, winning seven races at New York Racing Association tracks, including the Kingston Handicap and the Mount Vernon, and ended the year with earnings of \$177,644.

### Harness Racing

Bad weather, gas shortages, a decrease of 38 racing days, and the profusion of gambling opportunities in nearby New Jersey and Connecticut were undoubtedly factors in the 6.8% drop in attendance at New York's harness tracks. Handle,



NIATROSS, harness racing's undefeated Horse-of-the-Year, during one of four victories at Vernon Downs in 1979. NIATROSS won more money (\$604,900) and produced more two-minute wins (11) than any other 2-year-old in the standardbred sport's 173-year history.

however, nearly kept pace with last year's encouraging figures.

Total handle at Yonkers Raceway was \$220,912,220, up 7.3%, and at Roosevelt Raceway total handle of \$253,373,413 showed an increase of 1.05% over 1978. Monticello Raceway, with 44 fewer racing days this year, showed the greatest decline in both handle and attendance, handle decreasing by 26.14% and attendance down 22.06%. Batavia, Saratoga and Vernon Downs all experienced a drop in handle and attendance, while Buffalo Raceway increased handle by 3.43% but ended the year with 0.45% decline in attendance.

Average daily handle at all harness tracks amounted to \$599,782, an increase of 2.68% over 1978.

The average per capita wager at Yonkers Raceway was \$165.21, the highest of any harness track in the country.

Changes legislated by Chapter 267 of the Laws of 1977 have produced benefits for all segments of the harness racing industry and helped maintain New York's position as the premier harness racing State in the nation.

In 11,455 pari-mutuel races at New York harness tracks, purses totalling \$57,117,405 were offered to horsemen in 1979 under the supervision of the Agriculture and New York State Horse Breeding Development Fund; the Sire Stakes Program distributed purses amounting to \$7,100,000 in New York bred races.

Additional evidence of the Fund's effectiveness is seen in the number of mares bred this year, 3,028, the most since 1973, and an increase of 16.4% over 1978. With a standard-bred population of over 16,000 the fiscal impact on the economic and agricultural welfare of the State cannot be overlooked.

New York bred continue to take top honors at the important trotting and pacing events. *Happy Motoring* in addition to defeating the favorite, *Sonsam* in the Cane Pace, also took the \$225,000 Monticello Classic. New York bred

*Tijuana Taxi* set a new all-time record of 1:56.3 at Yonkers Raceway in the New York Sires Stakes, and *That's Terrific* became the richest two-year-old trotting colt in the country, earning \$144,068 in 1979.

### Quarter Horse Racing

There was no quarter horse racing in New York during 1979. An effort was made by a group of New York quarter horse owners and breeders to lease Tioga Park for a 1979 meet, but negotiations were not completed and there are no immediate plans to resume racing at the track.

Parr Meadows, in Suffolk County, was also closed all year, and its petition for reorganization under Chapter XI of the Federal Bankruptcy Laws was still pending in the courts.

According to the American Quarter Horse Association, over 16,500 registered quarter horses are in New York State, which would not only indicate a valuable contribution to the agricultural economy of the State but also portend the return of quarter horse racing to New York.

### Off-Track Betting

With the addition of 11 new off-track betting branches (5 in Western Region; 3 in Suffolk County; 2 in Catskill and 1 in Nassau) off-track betting handle for the year set a new record of \$1,372,026,710, an increase of 13.7% with all six regional corporations reporting significant gains. The handle increase on New York Racing Association races alone was 21.4% over 1978.

Off-track betting revenue to the State amounted to \$30,904,081, including the payments from Connecticut OTB. (Connecticut OTB handle on New York races rose from \$103,107,802 in 1978 to \$123,075,567 this year, an increase aided in some degree by the opening in October of the Teletrack facility in New Haven, where live races from the New York tracks are shown on large screen television.)

The OTB handle from out-of-state races rose significantly from \$61,169,441 in 1978 to \$70,908,301 in 1979, with the addition of races from Pimlico, Delaware Park, Arlington and the Preakness this year.

Revenue to cities and counties, including the 5% surcharge revenue, totalled \$113,111,466, up from \$101,460,196 in 1978, while payments to the racing industry amounted to \$72,408,936.

### **Bingo**

The Racing and Wagering Board each year issues identification numbers to organizations in the 845 municipalities which have enacted local laws or ordinances permitting bingo on a local option basis. The Board issues licenses to qualified suppliers of equipment; approves rent schedules chargeable by licensed commercial lessors; hears appeals relating to municipal determinations, and approves the expenditure of bingo funds.

Gross receipts from the conduct of bingo throughout the State amounted to \$203,275,085; net profit to participating organizations was \$59,003,994, and revenue to the State and municipalities reached \$3,884,690. During the year, over 3,363 organizations conducted more than 155,000 authorized bingo occasions.

### **Games of Chance**

Following legislative action in 1978 which expanded the fund raising capabilities of Games of Chance, gross receipts for this activity rose from \$763,629 in 1978 to \$2,668,986 in 1979, a gain of 250%. These statistics demonstrate the potential of this activity as a viable fund raising program.

The Board's powers and duties include the issuance of identification numbers to authorized organizations, issuance

of licenses to qualified suppliers of equipment, and the approval of expenditure of funds derived from the conduct of games of chance.

The law provides for a fee of \$25 for each license period to be paid by the organization, \$15 of which goes to the State and \$10 to the municipality.

The fee for a licensed lessor organization is \$50, half of which goes to the State and half to the municipality. The law also provides for an additional license fee, established by the Board at 5%, to be used by the municipalities for enforcement of the games of chance rules and regulations. This fee is retained wholly by the municipality.

The supplier's fee, payable to the State, has been established at \$25 plus 2% of gross sales or rentals.

In 1979, identification numbers were issued to 499 organizations for a total of 1,249 since January, 1977. A total of 317 municipalities have enacted the necessary local law or ordinance since January 1, 1977.

The decline in the conduct of illegal games of chance may be attributed to both the Statewide enforcement program instituted by the Board, and the increased number of licensed organizations.

# **FINANCIAL STATEMENTS**

THOROUGHBRED, HARNESS AND QUARTER HORSE RACING

REVENUE TO NEW YORK STATE

(All Tracks Combined)

	<u>1979</u>	<u>1978</u>	<u>Increase (Decrease)</u>	<u>Percent</u>
Number of Days Raced	1,607 (B)	1,659 (D)	(52)	(3.13)
Commission	\$66,256,991.99	\$ 78,020,726.88	\$(11,763,734.89)	(15.08)
Breakage	4,126,072.55	4,539,546.55	(413,474.00)	(9.11)
<b>Total Commission &amp; Breakage</b>	<b>\$70,383,064.54</b>	<b>\$ 82,560,273.43</b>	<b>\$(12,177,208.89)</b>	<b>(14.75)</b>
Winning Tickets From Prior Season, Uncashed As Of April 1st, 1979/78	1,166,498.40	1,148,327.05	18,171.35	1.58
State Admission Taxes	592,306.63	747,861.87	(155,555.24)	(20.80)
Track License Fees	130,025.00	136,425.00	(6,400.00)	(4.69)
Franchise Fees (N.Y.R.A.) (A)	13,169,916.00	16,000,000.00	(2,830,084.00)	(17.69)
Occupational License Fees	228,422.00	239,385.50	(10,963.50)	(4.58)
Fingerprint Identification Fees (C)	42,495.00	43,640.00	(1,145.00)	(2.62)
Fines Assessed	33,750.00	34,795.00	(1,045.00)	(3.00)
Miscellaneous Income	6,932.07	7,569.00	(636.93)	(8.42)
<b>TOTAL REVENUE TO STATE</b>	<b>\$85,753,409.64</b>	<b>\$100,918,276.85</b>	<b>\$(15,164,867.21)</b>	<b>(15.03)</b>

(A) Franchise Fees for 1979 are estimated by the Tax Department, pending audit. For 1978, Franchise Fees after audit shows \$15,216,300.

(B) Includes 1 day of racing for OTB only at Buffalo Raceway. No on-track pools.

(C) Fingerprint Identification Fees are paid to N.Y.S. Division of Criminal Justice Services.

(D) Includes 24 days raced at Tioga Park (Quarter Horse). This track did not race in 1979.

HIGHLIGHTS - THOROUGHBRED, HARNESS AND QUARTER HORSE RACING COMBINED - 1979

THOROUGHBRED

	1979	1978	Increase (Decrease)	Percent Increase (Decrease)
Programs Raced	468	459	9	1.96
Attendance	6,320,546	6,651,410	(330,864)	(4.97)
Handle	\$ 907,694,330	\$ 871,873,272	\$ 35,821,058	4.11
Revenue To State	37,897,794	53,358,351	(15,460,557)	(28.98)
Horsebreeder's Fund	2,723,083	2,179,685	543,398	24.93
Net Commission & Breakage To Associations (B)	101,679,665	95,952,561	5,727,104	5.97
Purses Paid To Horsemen	57,450,918	45,664,444	11,786,474	25.81
Admission Taxes To Towns, Cities and Counties	391,075	520,733	(129,658)	(24.90)
Drug Testing Fees (C)	462,435	373,404	89,031	23.84

HARNESS

	1979	1978	Increase (Decrease)	Percent Increase (Decrease)
Programs Raced	(A) 1,139	1,176	(37)	(3.15)
Attendance	5,437,538	5,930,256	(492,718)	(8.31)
Handle	\$ 682,551,955	\$ 686,966,934	\$ (4,414,979)	(0.64)
Revenue To State	47,851,864	47,450,642	401,222	0.85
Horsebreeder's Fund	3,412,760	3,434,835	(22,075)	(0.64)
Net Commission & Breakage To Associations (B)	84,021,380	85,273,512	(1,252,132)	(1.47)
Purses Paid To Horsemen	57,189,545	56,458,759	730,786	1.29
Admission Taxes To Towns, Cities and Counties	1,148,216	1,225,953	(77,737)	(6.34)
Drug Testing Fees (C)	462,435	345,092	117,343	34.00

QUARTER HORSE (D)

	1979	1978	Increase (Decrease)	Percent Increase (Decrease)
Programs Raced	--	24	(24)	(100.00)
Attendance	--	38,208	(38,208)	(100.00)
Handle	\$ --	\$ 1,657,578	\$ (1,657,578)	(100.00)
Revenue To State	3,752	109,284	(105,532)	(96.57)
Horsebreeder's Fund	--	1,539	(1,539)	(100.00)
Net Commission & Breakage To Associations (B)	--	250,272	(250,272)	(100.00)
Purses Paid To Horsemen	--	175,087	(175,087)	(100.00)
Admission Taxes To Towns, Cities and Counties	--	--	--	--
Drug Testing Fees (C)	--	1,859	(1,859)	(100.00)

THOROUGHBRED, HARNESS AND QUARTER HORSE  
RACING COMBINED

	1979	1978	Increase (Decrease)	Percent Increase (Decrease)
Programs Raced	(A) 1,607	1,659	(52)	(3.13)
Attendance	11,758,084	12,619,874	(861,790)	(6.83)
Handle	\$ 1,590,246,235	\$ 1,560,497,784	\$ 29,748,501	1.91
Revenue To State	35,753,410	100,918,277	(15,164,867)	(15.03)
Horsebreeder's Funds	6,135,843	5,616,059	519,784	9.26
Net Commission & Breakage To Associations (B)	185,701,045	181,476,345	4,224,700	2.33
Purses Paid To Horsemen	114,640,463	102,298,290	12,342,173	12.06
Admission Taxes To Towns, Cities and Counties	1,539,291	1,746,686	(207,395)	(11.87)
Drug Testing Fees (C)	924,870	720,355	204,515	28.39

(A) Includes one day of racing for O.T.B. Only at Buffalo Raceway.

(B) Minus Pools, and estimated Franchise Fees at N.Y.R.A. have been deducted.

(C) Fees represent track first instance fund reimbursement for the drug testing unit at Cornell University.

(D) In 1979 there was no Quarter Horse racing; in 1978, Tioga Park only was open.



THOROUGHBRED, HARNESS AND QUARTER HORSE RACING

REVENUE TO NEW YORK STATE

<u>THOROUGHBRED</u>				
	<u>1979</u>	<u>1978</u>	<u>Increase (Decrease)</u>	<u>Percent</u>
Number of Days Raced	468	459	9	1.96
Commission	\$22,210,364.25	\$34,505,597.56	\$ (12,295,233.31)	(35.63)
Breakage	1,422,717.57	1,685,880.39	(263,162.82)	(15.61)
<b>TOTAL COMMISSION &amp; BREAKAGE</b>	<b>\$23,633,081.82</b>	<b>\$36,191,477.95</b>	<b>\$ (12,558,396.13)</b>	<b>(34.70)</b>
Winning Tickets From Prior Season, Uncashed as of Apr. 1, 1979/78	666,061.55	624,033.40	42,028.15	6.73
State Admission Taxes	292,947.51	411,702.70	(118,755.19)	(28.84)
Track License Fees	16,125.00	16,425.00	(300.00)	(1.83)
Franchise Fees (N.Y.R.A.) (A)	13,169,916.00	16,000,000.00	(2,830,084.00)	(17.69)
Occupational License Fees	83,340.00	81,372.50	1,967.50	2.42
Fingerprint Identification Fees (C)	25,190.00	22,140.00	3,050.00	13.78
Fines Assessed	4,200.00	3,820.00	380.00	9.95
Miscellaneous Income	6,932.00	7,379.00	(447.00)	(6.06)
<b>TOTAL REVENUE TO STATE</b>	<b>\$37,897,793.88</b>	<b>\$53,358,350.55</b>	<b>\$ (15,460,556.67)</b>	<b>(28.98)</b>

<u>HARNESS</u>				
	<u>1979</u>	<u>1978</u>	<u>Increase (Decrease)</u>	<u>Percent</u>
Number of Days Raced	1,139 (B)	1,176	(37)	(3.15)
Commission	\$44,046,627.74	\$43,460,597.22	\$ 586,030.52	1.35
Breakage	2,703,354.98	2,843,662.60	(140,307.62)	(4.93)
<b>TOTAL COMMISSION &amp; BREAKAGE</b>	<b>\$46,749,982.72</b>	<b>\$46,304,259.82</b>	<b>\$ 445,722.90</b>	<b>0.96</b>
Winning Tickets From Prior Season, Uncashed as of Apr. 1, 1979/78	496,684.75	493,452.75	3,232.00	0.66
State Admissions Taxes	299,359.12	335,079.89	(35,720.77)	(10.66)
Track License Fees	113,900.00	117,600.00	(3,700.00)	(3.15)
Franchise Fees	145,082.00	150,825.00	(5,743.00)	(3.81)
Occupational License Fees	17,305.00	20,080.00	(2,775.00)	(13.82)
Fingerprint Identification Fees (C)	29,550.00	29,200.00	350.00	1.20
Fines Assessed	0.07	145.00	(144.93)	(99.95)
Miscellaneous Income	0.07	145.00	(144.93)	(99.95)
<b>TOTAL REVENUE TO STATE</b>	<b>\$47,851,863.66</b>	<b>\$47,450,642.46</b>	<b>\$ 401,221.20</b>	<b>0.85</b>

<u>QUARTER HORSE (D)</u>				
	<u>1979</u>	<u>1978</u>	<u>Increase (Decrease)</u>	<u>Percent</u>
Number of Days Raced	---	24	(24)	(100.00)
Commission	\$ ---	\$ 54,532.10	\$ (54,532.10)	(100.00)
Breakage	---	10,003.56	(10,003.56)	(100.00)
<b>TOTAL COMMISSION &amp; BREAKAGE</b>	<b>\$ ---</b>	<b>\$ 64,535.66</b>	<b>\$ (64,535.66)</b>	<b>(100.00)</b>
Winning Tickets From Prior Season, Uncashed as of Apr. 1, 1979/78	3,752.10	30,840.90	(27,088.80)	(97.83)
State Admissions Taxes	---	1,079.28	(1,079.28)	(100.00)
Track License Fees	---	2,400.00	(2,400.00)	(100.00)
Franchise Fees	---	---	---	---
Occupational License Fees	---	7,188.00	(7,188.00)	(100.00)
Fingerprint Identification Fees	---	1,420.00	(1,420.00)	(100.00)
Fines Assessed	---	1,775.00	(1,775.00)	(100.00)
Miscellaneous Income	---	45.00	(45.00)	(100.00)
<b>TOTAL REVENUE TO STATE</b>	<b>\$ 3,752.10</b>	<b>\$ 109,283.84</b>	<b>\$ (105,531.74)</b>	<b>(96.57)</b>

- (A) Franchise Fees, for 1979, are estimated by the Tax Department, pending audit. For 1978, Franchise Fees after audit amounted to \$15,216,300.
- (B) Includes 1 day of racing for OTB only, at Buffalo Raceway. No on-track pools.
- (C) Fingerprint Identification Fees are paid to N.Y.S. Division of Criminal Justice Services.
- (D) In 1979, Tioga and Parr Meadows were closed, while in 1978, there was racing at only one Quarter Horse track (Tioga Park).

THOROUGHBRED, HARNESS, AND QUARTER HORSE RACING

SUMMARY OF COMMISSION AND BREAKAGE - 1979

TRACK	COMMISSION AND BREAKAGE			NET COMMISSION AND BREAKAGE			Un cashed Winning Tickets From The 1978 Season, Paid To State In 1979
	(A) Commission	Breakage	Total	TO STATE	(B) TO ASSOCIATION	To Horse - Breeder - Fund	
Aqueduct	\$ 69,606,390.03	\$ 3,408,791.63	\$ 72,015,181.66	\$11,566,046.84	\$ 59,043,999.69	\$1,405,135.13	(C)
Belmont	47,858,698.09	2,115,036.83	49,973,734.92	8,047,768.16	40,947,691.40	978,274.96	(C)
Saratoga	8,764,169.46	423,226.99	9,187,396.45	1,499,075.26	7,510,261.97	178,059.22	(C)
TOTAL N.Y.R.A.	\$125,229,257.58	\$ 5,947,085.05	\$131,176,312.63	\$21,112,890.26	\$107,501,953.06	\$2,561,469.31	\$ 610,181.15
Finger Lakes	9,605,586.18	424,193.71	10,029,779.89	2,920,191.56	7,347,628.10	161,613.91	55,880.40
ALL THOROUGHBRED TRACK COMBINED	\$134,834,843.76	\$ 6,371,248.76	\$141,206,092.52	\$23,633,081.82	\$114,849,581.16	\$2,723,083.22	\$ 666,061.55
Tioga Park (D)							\$ 3,752.10
ALL QUARTER HORSE TRACKS COMBINED							\$ 3,752.10
Batavia Downs	\$ 7,670,865.35	\$ 316,352.88	\$ 7,987,218.23	\$ 1,700,229.28	\$ 6,082,377.59	\$ 204,582.73	\$ 28,464.70
Buffalo Raceway	7,809,150.25	348,976.34	8,158,126.59	1,757,621.51	6,191,601.71	208,842.03	32,936.15
Buffalo At Syracuse	285,750.83	14,131.87	299,882.30	65,993.72	226,295.24	7,593.34	1,777.50
Coshen Historic Half-Mile Track (D)							729.60
Monticello Raceway	7,598,964.30	296,202.01	7,895,166.31	1,789,259.94	5,909,639.60	196,205.02	61,069.00
Roosevelt Raceway	47,932,472.93	1,973,886.30	49,906,359.23	20,306,567.19	28,332,536.02	1,266,866.71	151,174.60
Orange County At Saratoga (D)							7,103.60
Saratoga Raceway	7,926,752.85	476,618.18	8,403,371.03	1,661,101.92	6,518,492.14	223,558.56	38,707.60
Verdon Downs	7,654,992.94	304,510.32	7,959,503.26	1,749,214.36	6,008,096.20	200,550.97	50,528.30
Yonkers Raceway	41,901,486.60	1,676,026.57	43,577,513.17	17,719,994.60	24,752,341.73	1,104,560.72	124,193.70
ALL HARNESS TRACKS COMBINED	\$128,780,436.05	\$ 5,406,704.07	\$134,187,140.12	\$46,749,982.72	\$ 84,021,380.03	\$3,412,760.08	\$ 496,684.75
ALL TRACKS COMBINED	\$263,615,279.81	\$11,777,952.83	\$275,393,232.64	\$70,383,064.54	\$199,870,961.19	\$6,135,843.30	\$1,166,498.40

(A) Commission at Harness tracks was 17% for Regular Pools and 19% for Multiple Pools. At the N.Y.R.A. tracks, Commission was 14% for Regular and Multiple Pools; at Finger Lakes, such pools were 17%. Commission on Exotic Pools at all tracks was 25%.

(B) Net Commission and Breakage To Association reflects deduction for Minus Pools amounting to \$3,363,611, and inclusion of statutory purse amounts of 1 1/4% at Roosevelt and Yonkers, 3/4% of handle at all other Harness tracks, and 1% of handle at Finger Lakes. Minus Pools at N.Y.R.A. are not segregated as separate amounts, but have also been deducted from Net Association share.

(C) Individual track information unavailable for Un cashed Winning tickets from N.Y.R.A.

(D) Tioga Park, Coshen and Orange County Driving Park Association at Saratoga did not open for racing in 1979.

THOROUGHBRED, HARNESS AND QUARTER HORSE RACING

SUMMARY OF HANDLE AND ATTENDANCE

TRACK	Programs Raced		HANDLE			ATTENDANCE				
	1979	1978	1979	1978	Increase (Decrease)	Percent	1979	1978	Increase (Decrease)	Percent
Agueduct	192	163	\$ 466,378,133	\$ 432,689,590	\$35,688,543	8.25	2,894,085	2,919,303	(25,218)	(0.86)
Belmont Park	101	108	326,091,768	329,578,994	(3,487,226)	(1.06)	2,289,019	2,526,305	(237,286)	(9.39)
Saratoga	24	24	59,353,099	52,629,131	6,723,968	12.78	565,762	553,949	11,813	2.13
N.Y.R.A. TOTALS	307	295	\$ 853,823,000	\$ 814,897,715	\$38,925,285	4.78	5,748,866	5,999,557	(250,691)	(4.18)
Finger Lakes	161	164	53,871,330	56,975,557	(3,104,227)	(5.45)	571,680	651,853	(80,173)	(12.30)
THOROUGHBRED TRACKS COMBINED	468	459	\$ 907,694,330	\$ 871,873,272	\$35,821,058	4.11	6,320,546	6,651,410	(330,864)	(4.97)
Tioga Park	(A)	24	(A)	\$ 1,657,578	(A)	(A)	(A)	38,208	(A)	(A)
QUARTER HORSE TRACKS COMBINED	--	24	--	\$ 1,657,578	\$ (1,657,578)	(100.00)	--	38,208	(38,208)	(100.00)
Batavia Downs	143	151	\$ 40,916,471	\$ 44,231,844	\$ (3,315,373)	(7.50)	443,141	491,698	(48,557)	(9.88)
Buffalo Raceway	155	147	41,768,333	40,381,757	1,386,576	3.43	459,408	461,468	(2,060)	(0.45)
Buffalo At Syracuse	7	7	1,518,667	1,466,719	51,948	3.54	19,560	19,404	156	0.80
Goshen Historic Half-Mile	(A)	4	(A)	396,227	(396,227)	(100.00)	(A)	10,617	(10,617)	(100.00)
Monticello Raceway	149	193	39,240,870	53,131,845	(13,890,975)	(26.14)	452,086	580,028	(127,942)	(22.06)
Roosevelt Raceway	154	154	253,373,413	250,750,372	2,623,041	1.05	1,627,394	1,777,965	(150,571)	(8.47)
Orange County At Saratoga Raceway	(B)	48	(B)	8,529,745	(B)	(B)	(B)	89,804	(B)	(B)
Saratoga Raceway	209	148	44,711,719	37,071,525	(889,551)	(1.95)	550,684	490,243	(29,363)	(5.06)
Vernon Raceway	166	171	40,110,262	45,137,067	(5,026,805)	(11.14)	548,081	639,952	(91,871)	(14.36)
Yonkers Raceway	155	153	220,912,220	205,869,833	15,042,387	7.31	1,337,184	1,369,077	(31,893)	(2.33)
HARNESS TRACKS COMBINED	1,138	1,176	\$ 682,551,955	\$ 686,966,934	\$ (4,414,979)	(0.64)	5,437,538	5,930,256	(492,718)	(8.31)
ALL TRACKS COMBINED	1,606	1,659	\$1,590,246,285	\$1,560,497,784	\$29,748,501	1.91	11,758,084	12,619,874	(861,790)	(6.83)

(A) Tioga Park and Goshen were closed in 1979; thus there are no comparisons to be made against last year's figures.

(B) Orange County Driving Park Ass'n. did not conduct a meet at Saratoga in 1979. For purposes of this summary, 1978 Amounts at Orange and at Saratoga are combined and compared to 1979 Amounts at Saratoga alone.

1979 - ON TRACK THOROUGHBRED RACING STATISTICS

	AQUEDUCT (Jan. 1-May 21) (Oct. 17-Dec. 31)		BELMONT (May 23-July 30) (Aug. 29-Oct. 15)		SARATOGA (Aug. 1-Aug. 27)		TOTAL N.Y.R.A.		FINGER LAKES (Mar. 10-Apr. 13)		TOTAL THOROUGHBRED	
Number of Licensed Programs	187	102	289	24	313	164	477					
Number of Programs Cancelled	5	1	6	---	6	3	9					
Number of Programs Raced	182	101	283	24	307	161	468					
Number of Races	1,631	909	2,540	216	1,756	1,467	4,223					
Attendance	2,894,085	2,289,019	5,183,104	565,762	5,748,866	571,680	6,320,546					
Daily Races Handle	\$228,340,470	\$145,136,978	\$373,537,446	\$28,202,695	\$401,740,143	\$26,981,677	\$428,622,020					
Daily Double Handle	56,470,984	46,569,157	103,040,141	9,787,611	112,827,752	5,767,874	118,595,626					
Exacta Handle	103,275,482	67,491,682	170,767,164	10,260,022	181,027,186	15,628,328	196,655,514					
Quinella Handle	52,714,366	46,780,764	99,495,130	6,968,811	106,463,941	---	106,463,941					
Triple Handle	27,576,831	20,053,187	47,630,018	4,133,960	51,763,978	5,593,251	57,357,229					
Total Handle	\$468,378,133	\$326,091,768	\$794,469,901	\$59,353,099	\$853,823,000	\$53,871,330	\$907,694,330					
Total Commission (A)	\$ 68,606,390.03	\$ 47,858,698.09	\$116,465,088.12	\$ 8,764,169.46	\$125,229,257.58	\$ 9,605,586.18	\$134,834,843.76					
Total Breakeage (B)	3,408,791.63	2,115,036.43	5,523,828.06	423,226.99	5,947,055.05	424,193.71	6,371,248.76					
Total Commission & Breakeage	\$ 72,015,181.66	\$ 49,973,734.52	\$121,988,916.18	\$ 9,187,396.45	\$131,176,312.63	\$10,029,779.89	\$141,206,092.52					
Commission To State	\$ 10,884,288.53	\$ 7,624,760.91	\$ 18,509,049.44	\$ 1,414,429.85	\$ 19,923,479.29	\$ 2,286,884.96	\$ 22,210,364.25					
Breakage To State	681,758.31	423,007.25	1,104,765.56	84,645.41	1,189,410.97	233,306.60	1,422,717.57					
Total Commission & Breakeage To State	\$ 11,566,046.84	\$ 8,047,768.16	\$ 19,613,815.00	\$ 1,499,075.26	\$ 21,112,890.26	\$ 2,520,191.56	\$ 23,633,081.82					
Franchise Fees (C)	7,230,284.00	5,017,738.00	12,248,022.00	921,894.00	13,169,916.00	---	13,169,916.00					
Total To State	\$ 18,796,330.84	\$ 13,065,506.16	\$ 31,861,837.00	\$ 2,420,969.26	\$ 34,282,806.26	\$ 2,520,191.56	\$ 36,803,997.82					
Commission To Association	\$ 56,316,966.37	\$ 39,255,662.22	\$ 95,572,628.59	\$ 7,171,680.39	\$102,744,308.98	\$ 7,157,087.31	\$109,901,396.29					
Breakage To Association	2,727,033.32	1,692,029.18	4,419,062.50	336,581.58	4,757,644.08	190,887.11	4,948,531.19					
Total To Association	\$ 59,043,999.69	\$ 40,947,691.40	\$ 99,991,691.09	\$ 7,510,261.97	\$107,501,953.06	\$ 7,347,974.42	\$114,849,927.48					
Commission To Horsebreeder's Fund	\$ 1,405,135.13	\$ 978,274.96	\$ 2,383,410.09	\$ 178,059.22	\$ 2,561,469.31	\$ 161,613.91	\$ 2,723,083.22					
Minus Pools	---	---	---	---	---	---	346.32					
Uncashed Winning Tickets (1978 Season)	---	---	---	---	---	---	---					
State Admission Taxes	\$ 139,153.90	\$ 96,660.61	\$ 235,814.51	\$ 37,383.84	\$ 273,198.35	\$ 19,749.16	\$ 292,947.51					
Gross Purses Paid	\$ 28,432,275	\$ 19,453,029	\$ 47,885,304	\$ 4,344,650	\$ 52,229,954	\$ 5,220,964	\$ 57,450,918					
Average Attendance Per Day	15,902	22,664	18,315	23,573	18,726	3,551	13,505					
Average Gross Handle Per Day	\$ 2,573,506	\$ 3,228,531	\$ 2,807,314	\$ 2,473,046	\$ 2,781,182	\$ 334,605	\$ 1,939,518					
Average Win-Place-Show Handle Per Race	140,000	159,733	147,062	130,568	145,769	18,324	101,497					
Average Daily Double Handle Per Day	310,280	461,081	364,099	407,817	367,517	35,825	253,409					
Average Exacta Handle Per Day	566,793 (E)	668,234	616,488 (E)	427,501	601,419 (E)	97,070	425,661 (E)					
Average Quinella Handle Per Day	366,072 (F)	463,176	406,103 (F)	290,367	395,777 (F)	---	395,777 (F)					
Average Triple Handle Per Day	171,285 (G)	198,546	181,794 (G)	172,248	180,993 (G)	34,741	128,316 (G)					
Average Handle Per Person	161.84	142.46	153.28	104.91	148.52	94.23	143.61					
Ratio Of Breakeage To Handle	0.73%	0.65%	0.70%	0.71%	0.70%	0.79%	0.70%					

(A) Commission was 17% for Regular and Multiple Pools at Finger Lakes. It was 14% at N.Y.R.A. Commission on Exotic Pools was 25% for all tracks.  
 (B) Breakeage is computed to nearest 10 cents for Regular and Multiple wagering, and to nearest 50 cents for Exotic wagering.  
 (C) Franchise Fees estimated by Tax Department pending audit. For 1978, Franchise Fees after audit were \$15,216,300.  
 (D) Individual track figures unavailable for Uncashed Winning Tickets at N.Y.R.A. (1978 Season).  
 (E) Exacta cancelled on six programs at Aqueduct (Divided by 176).  
 (F) Quinella began regularly 2/22/79 at Aqueduct and one Quinella held on 2/14/79 (Divided by 144).  
 (G) Triple cancelled on twenty-one programs at Aqueduct (Divided by 161).

COMPARISON OF AVERAGE HANDLE AND ATTENDANCE  
THOROUGHBRED, HARNESS, AND QUARTER-HORSE RACING

TRACK	AVERAGE DAILY HANDLE			AVERAGE DAILY ATTENDANCE		
	1979 Amount	1978 Amount	Increase (Decrease) Percent	1979 Amount	1978 Amount	Increase (Decrease) Percent
Agueduct	\$2,573,506	\$2,654,537	\$(81,031) (3.05)	15,902	17,910	(2,008) (11.21)
Belmont Park	3,228,631	3,051,657	176,974 5.80	22,664	23,392	(728) (3.11)
Saratoga	2,473,046	2,192,880	280,166 12.78	23,573	23,081	492 2.13
N.Y.R.A. TOTALS	\$2,781,182	\$2,762,365	\$18,817 0.68	18,726	20,337	(1,611) (7.92)
Finger Lakes	334,605	347,412	(12,807) (3.69)	3,551	3,975	(424) (10.67)
THOROUGHBRED TRACKS COMBINED	\$1,939,518	\$1,899,506	\$40,012 2.11	13,505	14,491	(986) (6.81)
Tioga Park	\$ (A)	\$ 69,066	\$ (A) (A)	(A)	1,592	(A) (A)
QUARTER HORSE TRACKS COMBINED	\$ ---	\$ 69,066	\$(69,066) (100.00)	---	1,592	(1,592) (100.00)
Batavia Downs	\$ 286,129	\$ 292,926	\$(6,797) (2.32)	3,099	3,256	(157) (4.82)
Buffalo Raceway	269,473	274,706	(5,233) (1.90)	2,964	3,139	(175) (5.58)
Buffalo At Syracuse	216,952	209,531	7,421 3.54	2,794	2,772	22 0.80
Goshen Historic Half-Mile	(A)	99,057	(99,057) (100.00)	(A)	2,654	(2,654) (100.00)
Monticello Raceway	263,362	275,295	(11,933) (4.33)	3,034	3,005	29 0.97
Roosevelt Raceway	1,645,282	1,628,249	17,033 1.05	10,567	11,545	(978) (8.47)
Orange County At Saratoga Raceway	(B)	177,703	(B) (B)	(B)	1,871	(B) (B)
Saratoga Raceway	213,932	250,483	(18,728) (8.05)	2,635	3,312	(374) (10.95)
Vernon Raceway	241,628	263,959	(22,331) (8.46)	3,302	3,742	(440) (11.76)
Yonkers Raceway	1,425,240	1,345,554	79,686 5.92	8,627	8,948	(321) (3.59)
HARNESS TRACKS COMBINED	\$ 599,782	\$ 584,156	\$ 15,626 2.68	4,778	5,043	(265) (5.25)
ALL TRACKS COMBINED	\$ 990,191	\$ 940,626	\$ 49,565 5.27	7,321	7,607	(286) (3.76)

(A) Tioga Park and Goshen were closed in 1979; thus there are no comparisons to be made against last year's figures.  
 (B) Orange County Driving Park Ass'n. did not conduct a meet at Saratoga Raceway in 1979. For purposes of this summary, 1978 averages at Orange and at Saratoga are combined and compared to 1979 averages at Saratoga alone. (Combined Aver. Handle - 1978 - was \$232,660, and Combined Aver. Attendance - 1978 - was 2,959)

FIRST SECTION

1979 ON-TRACK HARNESS RACING STATISTICS

	BATAVIA	BUFFALO	BUFFALO AT SYRACUSE	MONTICELLO	ROOSEVELT
Number of Licensed Programs	147	163	7	149	156
Number of Programs Cancelled	4	8	7	2	2
Number of Programs Raced	143	155	7	149	154
Number of Races	1,431	1,572	63	1,437	1,540
Attendance	443,141	459,408	19,560	452,086	1,627,394
Daily Races Handle	\$18,742,407	\$21,636,602	\$ 787,156	\$16,032,889	\$136,577,368
Daily Double Handle	4,079,982	4,082,176	159,600	3,545,482	16,728,922
Exacta Handle	13,567,682	10,951,238	356,124	8,454,108	58,015,926
Quinella Handle	---	---	---	3,477,446	---
Trifecta Handle	4,526,400	5,098,317	215,787	7,730,946	42,051,197
Total Handle	\$40,916,471	\$41,766,333	\$1,518,667	\$39,240,870	\$253,373,413
Total Commission (A)	\$ 7,670,865.35	\$ 7,808,150.25	\$ 285,750.83	\$ 7,598,964.30	\$ 47,932,472.93
Total Breakage (B)	316,352.88	348,976.34	14,131.47	298,202.01	1,973,886.30
Total Commission and Breakage	\$ 7,987,218.23	\$ 8,158,126.59	\$ 299,882.30	\$ 7,897,166.31	\$ 49,906,359.23
Commission To State	\$ 1,542,052.45	\$ 1,583,132.91	\$ 58,927.98	\$ 1,641,158.58	\$ 19,319,623.62
Breakage To State	158,176.83	174,488.60	7,065.74	148,101.36	986,943.57
Total To State	\$ 1,700,229.28	\$ 1,757,621.51	\$ 65,993.72	\$ 1,789,259.94	\$ 20,306,567.19
Commission To Association	\$ 5,924,230.17	\$ 6,017,175.31	\$ 219,229.51	\$ 5,761,600.70	\$ 27,345,982.60
Breakage To Association	158,176.05	174,487.74	7,065.73	148,100.65	986,942.73
Total To Association	\$ 6,082,406.22	\$ 6,191,663.05	\$ 226,295.24	\$ 5,909,701.35	\$ 28,332,925.33
Horsebreeder's Fund Share (Commission) (C)	\$ 204,562.73	\$ 208,842.03	\$ 7,593.34	\$ 196,205.02	\$ 1,266,866.71
Minus Pools	28.63	61.34	---	61.95	389.31
Uncashed Winning Tickets (1978 Season)	\$ 28,464.70	\$ 32,936.15	\$ 1,777.50	\$ 61,069.00	\$ 151,174.60
State Admission Taxes	18,673.94	16,965.16	857.10	19,869.50	116,447.57
Gross Purses Paid	4,469,750.00	4,224,297.50	747,134.00	3,667,992.02	18,679,710.16
Average Attendance Per Day	3,099	2,964	2,794	3,034	10,567
Average Gross Handle Per Day	\$ 286,129	\$ 269,473	\$ 216,952	\$ 263,362	\$ 1,645,282
Average Win-Place-Show Handle Per Race	\$ 13,097	\$ 13,764	\$ 12,495	\$ 11,157	\$ 88,687
Average Daily Double Handle Per Day	\$ 28,531	\$ 26,508	\$ 22,800	\$ 23,795	\$ 108,629
Average Exacta Handle Per Day	\$ 94,879	\$ 70,653	\$ 50,875	\$ 56,739	\$ 376,727
Average Quinella Handle Per Day	---	---	---	23,339	---
Average Trifecta Handle Per Day	\$ 31,653	\$ 33,322	\$ 30,827	\$ 51,886	\$ 273,060
Average Handle per person	\$ 92.33	\$ 90.92	\$ 77.64	\$ 86.80	\$ 155.70
Ratio Of Breakage To Handle	0.177	0.84	0.93	0.75	0.78

(A) Commission was 17% of Handle for all Regular Race Pools and 25% for all Exotic Pools (betting on three or more horses). For Multiple Pools (Daily Double, Exacta and Quinella) it was 19%.

(B) Breakage is computed to nearest 10 cents for Regular and Multiple wagering, and to the nearest 50 cents for Exotic wagering.

(C) The Horsebreeder's Fund received a share of Commission (% of Total Handle).

1979 ON-TRACK HARNESS RACING STATISTICS

SECOND SECTION

	SARATOGA		VERNON		YONKERS		TOTAL	
	Jan. 5-Jan. 28	Apr. 19-Nov. 17	Apr. 18-Oct. 27	Jan. 1-Jan. 20	Mar. 12-Apr. 21	June 4-July 14	Aug. 23-Oct. 17	Dec. 10-Dec. 31
Number of Licensed Programs	210	166	155	15				1,153
Number of Programs Cancelled	1	166	155	15				1,138
Number of Programs Raced	209	166	155					11,227
Number of Races	2,076	1,558	1,550					5,437,538
Attendance	550,684	548,081	548,081					
Daily Races Handle	\$28,423,688	\$16,756,725	\$16,756,725	\$108,436,312				\$347,393,146
Daily Double Handle	6,197,191	3,916,736	3,916,736	15,299,904				53,919,993
Exacta Handle	10,180,840	13,283,840	13,283,840	62,227,820				166,856,738
Quinella Handle								13,658,286
Trifecta Handle				34,948,184				100,723,792
Total Handle	\$44,711,719	\$40,110,262	\$40,110,262	\$220,912,220				\$682,551,955
Total Commission (A)	\$7,926,752.85	\$7,654,992.94	\$7,654,992.94	\$41,901,486.60				\$128,780,436.05
Total Breakege (B)	476,618.18	304,510.32	304,510.32	1,676,026.57				5,406,704.07
Total Commission and Breakege	\$8,403,371.03	\$7,959,503.26	\$7,959,503.26	\$43,577,513.17				\$134,187,140.12
Commission To State	\$1,422,792.29	\$1,596,958.79	\$1,596,958.79	\$16,881,381.12				\$44,046,627.74
Breakege To State	238,309.63	152,255.57	152,255.57	838,013.68				2,703,334.98
Total To State	\$1,661,101.92	\$1,749,214.36	\$1,749,214.36	\$17,719,394.80				\$46,749,962.72
Commission To Association	\$6,280,402.00	\$5,857,483.18	\$5,857,483.18	\$23,914,944.76				\$81,321,048.23
Breakege To Association	238,308.55	152,254.75	152,254.75	838,012.89				2,703,349.09
Total To Association	\$6,518,710.55	\$6,009,737.93	\$6,009,737.93	\$24,752,957.65				\$84,024,397.32
Horsbreeder's Fund Share (Commission) (C)	\$223,558.56	\$200,550.97	\$200,550.97	\$1,104,560.72				\$3,412,760.08
Minus Pools	218.41	1,641.73	1,641.73	615.92				3,017.29
Uncashed Winning Tickets (1978 Season)	\$38,707.60	\$50,528.30	\$50,528.30	\$124,193.70				\$(H) 496,684.75
State Admission Taxes	25,361.95	22,874.84	22,874.84	78,409.06				299,359.12
Gross Purses Paid	4,729,396.00	4,031,500.00	4,031,500.00	16,640,365.56				57,189,545.24
Average Attendance Per Day	2,635	3,302	3,302	8,627				4,778
Average Gross Handle Per Day	\$213,932	\$241,628	\$241,628	\$1,425,240				\$599,782
Average Win-Place-Show Handle Per Race	\$13,692	\$10,755	\$10,755	\$9,959				\$30,943
Average Daily Double Handle Per Day	\$29,221	\$23,595	\$23,595	\$98,709				\$(D) 47,423
Average Exacta Handle Per Day		\$80,023	\$80,023	\$401,470				\$(E) 179,609
Average Quinella Handle Per Day								\$(F) 39,361
Average Trifecta Handle Per Day		\$37,066	\$37,066	\$225,472				\$(G) 108,656
Average Handle Per Person	\$81.19	\$73.18	\$73.18	\$165.21				\$125.53
Ratio Of Breakege To Handle	1.07	0.76	0.76	0.76				0.79

(D) Total Daily Double Handle divided by 1,137 racing days (cancelled 1 day at Buffalo).  
 (E) Total Exacta Handle divided by 929 days.  
 (F) Total Quinella Handle divided by 347 days (held 198 days only at Saratoga).  
 (G) Total Trifecta Handle divided by 927 days (cancelled 2 days at Buffalo).  
 (H) Goshen and Orange At Saratoga did not open in 1979 but this figure includes \$729.60 from Goshen and \$7,103.60 from Orange At Saratoga since both were open in 1978.

1979

SUMMARY OF CHANGES RESULTING FROM 1977 PARI-MUTUEL LAWS (A)  
AT ALL HARNESS TRACKS AND AT FINGER LAKES RACE TRACK

HARNESS	ON-TRACK				
	Net Increase In Revenue To Track	Net Increase In Allocations To Purses	Increase In Revenue To Breeders' Funds	Decrease In Revenue To The State	Decrease In Return To Public (B)
Batavia Downs	\$ 386,661.20	\$ 636,251.59	\$ 125,494.70	\$ (795,454.21)	\$ (352,953.28)
Buffalo Raceway	352,432.00	612,596.19	121,598.15	(785,958.06)	(300,668.28)
Buffalo At Syracuse Fair	23,198.20	11,390.00	4,060.47	(28,334.19)	(10,314.48)
Monticello Raceway	411,921.26	568,920.71	122,154.69	(793,455.94)	(309,540.72)
Roosevelt Raceway	2,558,575.67	4,872,884.79	773,395.34	(6,709,958.84)	(1,494,895.96)
Saratoga Raceway	698,812.11	335,337.89	104,404.28	(812,793.66)	(325,760.62)
Vernon Downs	359,518.29	617,476.23	124,423.59	(757,406.59)	(344,011.52)
Yonkers Raceway	1,920,252.05	4,041,570.79	685,554.26	(5,096,822.62)	(1,550,554.48)
TOTAL HARNESS	\$6,711,370.78	\$11,696,428.19	\$2,061,085.48	\$ (15,780,184.11)	\$ (4,688,700.34)
Finger Lakes Race Track	282,109.57	538,713.30	76,775.19	(897,598.06)	-0-
TOTALS - ON-TRACK	\$6,993,480.35	\$12,235,141.49	\$2,137,860.67	\$ (16,677,782.17)	\$ (4,688,700.34)

(A) Changes were made in the distribution of Commission and Breakage to tracks, State and Breeders' Funds (effective 5/1/77 for harness tracks and 8/1/77 for Finger Lakes).

(B) Reflects change of commission retained at harness tracks on multiple betting handle (Daily Double, Exacta & Quinella), which was raised from 17% to 19%. The additional tax of 2% retained is shown here.



# OFF TRACK BETTING

1979 OFF-TRACK BETTING TOTAL HANDLE BY TRACK AND REGION

	New York City	Nassau	Suffolk	Catskill	Capital	Western Region	Total OTB	% Difference (by track) with 1978
Aqueduct	\$322,900,457	\$49,250,424	\$ 38,738,067	\$22,668,401	\$35,459,931	\$ 39,945,075	\$ 508,862,355	28.3%
Belmont	197,909,567	24,673,563	21,691,220	12,125,621	18,305,113	14,026,989	288,732,073	11.5
Saratoga	52,009,774	6,776,699	5,193,536	3,095,893	6,232,697	3,314,287	76,622,886	18.8
<b>TOTAL NYRA</b>	<b>\$572,819,798</b>	<b>\$80,700,686</b>	<b>\$ 65,622,823</b>	<b>\$37,889,915</b>	<b>\$59,997,741</b>	<b>\$ 57,286,351</b>	<b>\$ 874,317,314</b>	<b>21.4%</b>
FingerLakes	\$ 3,896,456	\$ 380,026	\$ 352,896	\$ 1,047,708	\$ 3,845,820	\$ 22,531,058	\$ 32,053,964	(23.7)
<b>TOTAL THOROUGHBRED</b>	<b>\$576,716,254</b>	<b>\$81,080,712</b>	<b>\$ 65,975,719</b>	<b>\$38,937,623</b>	<b>\$63,843,561</b>	<b>\$ 79,817,409</b>	<b>\$ 906,371,278</b>	<b>19.4%</b>
Roosevelt Raceway	\$105,778,569	\$21,941,527	\$ 16,368,758	\$11,180,642	\$ 3,877,665	\$ 747,262	\$ 161,894,423	2.9%
Yonkers Raceway	91,966,166	25,058,166	19,534,927	10,984,777	3,922,022	738,660	152,205,318	2.5
Monticello Raceway	11,197,330	1,670,998	1,340,165	2,910,166	178,967	189,448	17,487,074	(28.0)
Buffalo Raceway	-----	-----	-----	-----	48,704	22,559,555	22,608,259	5.7
Batavia Raceway	-----	-----	-----	-----	-----	22,576,925	22,576,925	( 2.6)
Saratoga Raceway	-----	-----	-----	-----	14,225,897	4,608	14,230,505	25.2
Vernon Downs	-----	-----	-----	131,412	1,817,596	1,795,619	3,744,627	-----
<b>TOTAL HARNES</b>	<b>\$208,942,065</b>	<b>\$48,671,291</b>	<b>\$ 39,243,850</b>	<b>\$25,206,997</b>	<b>\$24,070,851</b>	<b>\$ 48,612,077</b>	<b>\$ 394,747,131</b>	<b>2.3%</b>
Calder	\$ 3,867,566	\$ 402,790	\$ 341,740	\$ 208,787	\$ 361,529	632,423	5,814,835	-----
Hialeah	3,574,962	519,743	346,237	214,675	348,553	472,035	5,476,205	-----
Keystone	14,065,100	1,592,079	1,143,486	767,482	1,077,031	1,313,470	19,958,648	-----
Gulfstream	9,819,904	824,958	617,584	470,126	812,234	1,247,095	13,791,901	-----
Pimlico	4,634,296	394,990	323,912	186,515	254,204	205,883	5,999,800	-----
Delaware Park	8,390,278	733,984	632,283	382,056	510,182	444,394	11,093,177	-----
Arlington	345,848	32,498	26,847	15,582	24,089	31,758	476,622	-----
<b>TOTAL OUT-OF-STATE</b>	<b>\$ 44,697,954</b>	<b>\$ 4,501,042</b>	<b>\$ 3,432,089</b>	<b>\$2,245,223</b>	<b>\$ 3,387,822</b>	<b>\$ 4,347,058</b>	<b>\$ 62,611,188</b>	<b>16.5%</b>
Gulfstream (1/24)	\$ 348,491	\$ 36,037	\$ 33,059	\$ 17,933	\$ 35,241	\$ 62,696	\$ 533,457	-----
Gulfstream (2/17)	335,257	40,730	34,992	25,258	15,569	22,197	474,003	-----
Gulfstream (3/3)	431,473	54,446	23,501	30,014	21,563	31,358	592,355	-----
Stepping Stone	143,947	17,869	11,998	9,997	6,532	9,643	199,988	-----
Kentucky Oaks	253,028	11,495	5,688	8,400	8,500	11,132	298,243	-----
Kentucky Derby	2,523,550	353,046	254,656	232,727	225,589	424,398	4,013,966	-----
Preakness	969,437	123,017	87,569	100,216	73,619	149,469	1,503,327	-----
Washington D.C. International	453,981	69,067	43,745	35,364	31,766	47,851	681,774	-----
<b>TOTAL SPECIAL EVENTS</b>	<b>\$ 5,459,164</b>	<b>\$ 705,707</b>	<b>\$ 495,208</b>	<b>\$ 459,909</b>	<b>\$ 418,379</b>	<b>\$ 758,746</b>	<b>\$ 8,297,113</b>	<b>11.3%</b>
<b>TOTAL ALL TRACKS</b>	<b>\$835,815,437</b>	<b>\$134,958,752</b>	<b>\$109,146,866</b>	<b>\$66,849,752</b>	<b>\$91,720,613</b>	<b>\$133,535,290</b>	<b>\$1,372,026,710</b>	<b>13.7%</b>

Off-Track Betting  
Schedule A  
1979

1979 OTB REVENUES

	New York City	Nassau	Suffolk	Catskill	Capital	Western Region	Total Corporation
Total Handle:	\$835,815,437	\$134,958,752	\$109,146,866	\$66,849,752	\$91,720,613	\$133,535,290	\$1,372,025,710
Payments to Industry	\$44,735,865	\$7,018,160	\$5,701,885	\$3,534,089	\$4,561,098	\$6,852,839	\$72,408,936
Payments to NYS Commissions	\$12,329,531	\$2,073,493	\$1,686,016	\$1,041,921	\$1,213,541	\$1,969,555	\$20,314,057
Breakage	1,850,627	285,628	230,441	138,082	203,668	252,798	2,961,244
*Unclaimed Tickets	3,771,503	502,791	421,903	300,356	352,268	545,089	5,893,910
	\$17,951,661	\$2,861,912	\$2,338,350	\$1,480,359	\$1,769,477	\$2,767,442	\$29,169,211
(1) Revenue to cities counties in which OTB corporation is located (excluding surtax)	\$30,962,681	\$8,323,092	\$5,645,104	\$3,242,192	\$2,161,192	\$3,692,100	\$54,026,361
(2) 5% Surtax Revenue to cities and counties in which OTB corporation is located	\$27,297,224	\$3,917,208	\$2,455,810	\$1,502,242	\$2,014,261	\$2,935,064	\$40,121,809
(3) 5% Surtax Revenue to other cities and counties	\$8,714,322	\$1,849,121	\$2,281,562	\$1,382,957	\$1,934,028	\$2,701,504	\$18,963,296
TOTALS	\$66,974,227	\$14,189,423	\$10,382,476	\$6,127,391	\$6,109,481	\$9,328,468	\$113,111,466

(Summations of (1), (2), and (3) on next page)

Revenue to New York State from New York State OTB Corporations	\$29,169,211
Revenue to New York State from Connecticut OTB	\$1,734,870
TOTAL	\$30,904,081

\*Actual 1978 Unclaimed Tickets

NOTE: Besides the revenue shown for NYC OTB and Nassau OTB for distribution, an additional \$7,199,950 and \$4,629,923 respectively, are also to be distributed to participating cities and counties. This represents surcharge monies due from the other OTB Corporations.

Off-track Betting  
Schedule B  
1979

GROSS REVENUE TO OTB CITIES AND COUNTIES (COMBINATION OF (1) and (2))

Region:	
New York City	\$58,259,905
Nassau	12,240,300
Suffolk	8,100,914
Catskill	4,744,434
Capital	4,175,453
Western	6,627,164
	<u>\$94,148,170</u>

Total Revenue From OTB To All Cities and Counties

(1), (2) and (3) -----\$113,111,466

Total Government Revenue From OTB Corporations

New York State, Cities, and Counties-----\$142,280,677

Total Revenue Including Connecticut Revenue

-----\$144,015,547

RECORD OF OTB STATE REVENUE (since Inception)

	Off-Track Betting Handle	Off-Track Betting Revenue to State	Uncashed Tickets
1971	\$ 118,588,595	\$ 592,943	\$ 936,156.25
1972	452,633,234	4,391,979	4,093,265.85
1973	702,694,406	12,907,695	3,990,598.75
1974	815,250,705	18,236,026	4,258,536.70
1975	906,858,411	20,951,184	4,958,162.35
1976	1,052,902,983	24,175,816	5,687,335.15
1977	1,128,052,298	20,113,234	5,598,670.05
1978	1,206,530,259	20,976,959	5,893,910.85
1979	1,372,026,710	23,275,300	*6,000,000.00

\* Estimated for 1979 Unclaimed Tickets

1979 REVENUE REPORTED BY  
OTB CORPORATIONS

UNAUDITED

	New York City	Nassau	Suffolk	Catskill	Capital	Western Region	Total
Gross Handle	\$835,815,437	\$134,958,752	\$109,146,866	\$66,849,752	\$91,720,613	\$133,535,290	\$1,372,026,710
Less:							
Winners Share	540,115,990	102,920,262	83,210,681	50,930,577	70,960,041	102,177,922	1,050,315,473
Surcharge and Surcharge Breakage	36,011,547	5,866,331	4,737,372	2,885,200	4,038,289	5,636,368	59,175,107
Gross Commissions and Breakage	\$159,687,900	\$ 26,172,159	\$ 21,198,813	\$13,033,975	\$16,722,283	\$ 25,721,000	\$ 262,536,130
Less:							
To New York State	\$ 14,180,158	\$ 2,359,121	\$ 1,916,457	\$ 1,180,003	\$ 1,417,209	\$ 2,222,353	\$ 23,275,301
To Racing Industry	44,735,865	7,018,160	5,701,885	3,539,089	4,561,098	6,852,839	72,408,936
Gross Retention	\$100,771,877	\$ 16,794,878	\$ 13,580,471	\$ 8,314,883	\$10,743,976	\$ 16,645,808	\$ 166,851,893
Less:							
Operating Expenses	69,809,196	8,471,736	7,935,367	5,072,691	8,581,984	**12,953,708	112,824,682
Net From Operations	\$ 30,962,681	\$ 8,323,142	\$ 5,645,104	\$ 3,242,192	\$ 2,161,992	\$ 3,692,100	\$ 54,027,211
	3.7%	6.17%	5.17%	4.84%	2.35%	2.76%	3.93%
Other Revenue:							
Surcharge on Communities	\$ 27,297,224	\$ 3,917,208	\$ 2,455,810	\$ 1,502,242	\$ 2,104,261	\$ 2,935,064	\$ 40,211,609
Surcharge to Others	8,714,322	1,949,123	2,281,562	1,382,957	1,934,028	2,701,304	18,963,296
Interest Income		371,883	296,766	116,250	77,196	180,968	1,043,063
Miscellaneous		*( 33,174)	144,422		826,143		937,391
Gross Benefits	\$ 66,974,227	\$ 14,528,182	\$ 10,823,664	\$ 6,243,641	\$ 7,103,620	\$ 9,509,436	\$ 115,182,770
	8.01%	10.76%	9.92%	9.33%	7.74%	7.12%	8.39%
Uncashed Tickets (EST)	\$ 1,837,000	\$ 589,900	\$ 430,000	\$ 360,000	400,000	\$ 639,700	\$ 5,956,600
1978	3,771,503	502,791	421,903	300,356	352,268	545,089	5,893,910

\*\* Includes \$169,333 for Admission taxes

\* Reserved contingent upon settlement of former employee litigation.

DISTRIBUTION OF OTB SURCHARGE MONIES 1979

	<u>New York City</u>	<u>Nassau</u>	<u>Suffolk</u>	<u>Catskill</u>	<u>Capital</u>	<u>Western Region</u>	<u>Total OTB Corporation</u>
<u>To: Participating Counties</u>	\$27,297,224	\$3,917,208	\$2,455,810	\$1,502,242	\$2,104,261	\$2,935,064	\$40,121,809
<u>To: Other Localities</u>							
City of Yonkers	\$ 1,849,910	\$ 521,037	\$ 403,568	\$ 229,990	\$ 81,428	\$ 14,839	\$ 3,100,772
Nassau County	5,389,576	-----	746,695	431,557	386,475	245,647	7,199,950
Sullivan County	215,844	31,156	26,279	59,584	3,504	3,669	340,136
Ontario County	80,063	8,538	6,864	23,126	80,582	473,576	672,749
Saratoga County	1,178,929	185,255	117,783	68,423	448,828	73,197	2,042,415
Genesee County	-----	-----	-----	-----	-----	447,205	447,205
Oneida County	-----	-----	-----	2,848	37,048	36,639	76,535
Erie County	-----	-----	-----	-----	928	452,683	453,611
New York City	-----	1,233,137	980,373	567,429	895,135	953,849	4,629,923
<u>TOTAL OTHER LOCALITIES</u>	<u>\$8,714,322</u>	<u>\$1,949,123</u>	<u>\$2,281,562</u>	<u>\$1,382,957</u>	<u>\$1,934,028</u>	<u>\$2,701,304</u>	<u>\$18,963,296</u>
<u>TOTAL SURCHARGE</u>	<u>\$36,011,546</u>	<u>\$5,866,331</u>	<u>\$4,737,372</u>	<u>\$2,885,199</u>	<u>\$4,038,289</u>	<u>\$5,636,368</u>	<u>\$59,085,105</u>

NOTE: Surcharge monies from corporations to Nassau County and New York City are paid directly to Nassau OTB and NYC OTB. That is, \$7,199,950 and \$4,629,923 are paid to Nassau OTB and NYC OTB respectively. These monies are then distributed with revenue from handle to their participating cities and counties. Such revenue distributions are reported, without these additional surcharge monies, in other schedules of this report.

(REGULAR, MULTIPLE, EXOTIC WAGERING)  
 OTB 1979 YEAR END STATISTICS  
 NYRA HANDLE (AQUEDUCT, BELMONT, SARATOGA)

	New York City	Nassau	Suffolk	Catskill	Capital	Western Region	Total Corporation
<u>Aqueduct</u> (1/1-5/21)	R \$ 67,618,505 M 104,453,028 E 23,238,378	\$ 13,155,088 14,987,270 3,716,904	\$ 10,049,746 11,014,438 3,005,426	\$ 5,322,103 6,849,844 1,806,514	\$ 8,736,010 11,429,067 2,476,839	\$ 8,309,693 13,359,498 3,767,753	\$ 113,191,145 162,093,145 38,011,814
<u>Aqueduct</u> (10/17-12/31)	R \$ 43,189,545 M 69,206,845 E 15,194,156	\$ 6,802,060 8,485,388 2,103,714	\$ 5,916,419 7,038,642 1,713,396	\$ 3,143,329 4,491,825 1,054,786	\$ 4,655,873 6,757,585 1,404,557	\$ 4,723,135 7,811,106 1,973,890	\$ 68,430,361 103,791,391 23,444,499
<u>TOTAL AQUEDUCT</u>	\$ 322,900,457	\$ 49,250,424	\$ 38,738,067	\$ 23,668,401	\$ 35,459,931	\$ 39,945,075	\$ 508,962,355
<u>Belmont</u> (5/23-7/30)	R \$ 41,110,478 M 63,598,044 E 13,505,978	\$ 5,811,871 7,090,989 1,729,544	\$ 5,179,196 5,904,900 1,547,802	\$ 2,703,003 3,424,093 871,248	\$ 3,925,791 5,317,371 1,200,578	\$ 2,886,330 4,189,397 1,341,333	\$ 61,616,669 89,524,794 20,196,483
<u>Belmont</u> (8/29-10/15)	R \$ 27,451,278 M 43,314,707 E 8,929,082	\$ 3,879,578 4,994,313 1,177,268	\$ 3,707,649 4,335,483 1,016,190	\$ 1,958,314 2,564,179 604,784	\$ 2,982,441 4,037,239 841,693	\$ 1,973,139 2,814,910 821,880	\$ 41,952,399 62,050,831 13,390,897
<u>TOTAL BELMONT</u>	\$ 197,909,567	\$ 24,673,563	\$ 21,691,220	\$ 12,125,621	\$ 18,305,113	\$ 14,026,989	\$ 288,732,073
<u>Saratoga</u> (8/1-8/27)	R \$ 18,363,000 M 28,285,440 E 5,361,334	\$ 2,734,841 3,319,472 732,386	\$ 2,119,886 2,478,818 594,832	\$ 1,210,258 1,527,967 357,668	\$ 2,343,641 3,168,804 720,252	\$ 1,149,300 1,656,359 508,628	\$ 27,910,926 40,436,860 5,275,100
<u>TOTAL SARATOGA</u>	\$ 52,009,774	\$ 6,776,699	\$ 5,193,536	\$ 3,095,893	\$ 6,232,697	\$ 3,314,287	\$ 76,622,886
<u>TOTAL NYRA</u>	R \$ 197,732,806 M 308,858,064 E 66,228,928	\$ 32,373,438 38,867,432 9,459,816	\$ 26,972,896 30,772,281 7,877,646	\$ 14,337,007 18,857,908 4,695,000	\$ 23,643,756 30,710,066 6,643,919	\$ 19,041,597 29,831,270 8,413,484	\$ 313,101,500 457,897,021 103,318,793
<u>TOTAL</u>	\$ 572,819,798	\$ 80,700,686	\$ 65,622,823	\$ 37,889,915	\$ 59,997,741	\$ 57,286,351	\$ 874,317,314

OTB 1979 YEAR END STATISTICS  
 FINGERLAKES HANDLE  
 (REGULAR, MULTIPLE AND EXOTIC WAGERING)

		New York City	Nassau	Suffolk	Catskill	Capital	Western Region	Total Corporation
MEET (3/10-4/21)	R	No Wagering	No Wagering	No Wagering	\$ 27,886	\$ 65,060	\$ 465,213	\$ 558,159
	M	No Wagering	No Wagering	No Wagering	31,032	135,090	970,668	1,136,790
	E	No Wagering	No Wagering	No Wagering	16,089	43,890	410,673	470,652
MEET (4/22-6/30)	R	No Wagering	No Wagering	No Wagering	\$ 76,732	\$ 245,659	\$1,524,182	\$1,846,573
	M	\$ 693,129	\$ 66,747	\$ 61,084	166,738	664,386	4,220,840	5,872,924
	E	389,186	37,476	31,272	78,196	186,368	1,271,499	1,973,997
MEET (7/1-9/4)	R	No Wagering	No Wagering	No Wagering	\$ 76,382	\$ 263,355	\$1,411,445	\$1,751,182
	M	\$ 857,843	\$ 84,061	\$ 82,929	155,652	716,894	4,212,902	6,109,381
	E	542,676	47,780	47,740	83,124	171,702	1,134,579	2,027,601
MEET (9/7-11/13)	R	No Wagering	No Wagering	No Wagering	\$ 69,046	\$ 281,662	\$1,321,649	\$1,672,377
	M	\$ 906,172	\$ 90,686	\$ 82,825	182,563	877,567	4,393,981	6,533,794
	E	507,450	53,276	47,046	84,268	214,167	1,194,327	2,100,534
TOTAL ALL MEETS								
	R	No Wagering	No Wagering	No Wagering	\$ 250,046	\$ 855,756	\$ 4,722,489	\$ 5,828,291
	M	\$2,457,144	\$ 241,494	\$ 226,838	535,985	2,393,937	13,797,491	19,652,889
	E	1,439,312	138,532	126,058	261,677	596,127	4,011,078	6,572,784
TOTAL		\$3,896,456	\$ 380,026	\$ 352,896	\$1,047,708	\$3,845,820	\$22,531,058	\$32,053,964



OTB 1979 YEAR END STATISTICS  
ROOSEVELT HANDLE

(REGULAR, MULTIPLE AND EXOTIC WAGERING)

	New York City	Nassau	Suffolk	Catskill	Capital	Western Region	Total Corporation
<u>MEET</u> (1/23-3/10)	R \$ 8,589,980 M 13,542,258 E 10,857,927	R \$ 1,845,232 M 2,046,336 E 2,043,036	R \$ 1,577,528 M 1,730,708 E 1,745,598	R \$ 1,031,516 M 1,256,468 E 1,167,825	R \$ 691,970 M 1,364,868 E 722,321	R \$ 52,500 M 155,232 E 151,866	R \$ 13,788,726 M 20,095,870 E 16,691,573
<u>MEET</u> (4/23-6/20)	R \$ 5,954,798 M 9,245,192 E 7,817,235	R \$ 1,610,892 M 1,723,646 E 1,754,133	R \$ 1,361,022 M 1,443,264 E 1,519,350	R \$ 707,766 M 844,582 E 803,667	No Wagering	No Wagering	R \$ 9,634,478 M 13,256,694 E 11,894,385
<u>MEET</u> (7/16-8/22)	R \$ 4,714,454 M 7,154,096 E 6,261,543	R \$ 1,306,518 M 1,413,134 E 1,429,935	R \$ 1,114,184 M 1,142,382 E 1,200,747	R \$ 542,512 M 635,734 E 626,364	No Wagering	No Wagering	R \$ 7,677,668 M 10,345,346 E 9,518,589
<u>MEET</u> (10/18-12/8)	R \$ 8,079,548 M 12,762,180 E 10,799,358	R \$ 2,064,856 M 2,358,304 E 2,345,505	R \$ 1,723,282 M 1,897,698 E 1,909,995	R \$ 1,034,304 M 1,290,750 E 1,239,144	R \$ 227,064 M 499,744 E 371,698	R \$ 52,546 M 165,100 E 170,018	R \$ 13,181,600 M 19,973,776 E 16,835,718
<u>TOTAL ALL ROOSEVELTS MEETS</u>	R \$ 27,338,780 M 42,703,726 E 35,736,063	R \$ 6,827,498 M 7,541,420 E 7,572,609	R \$ 5,776,016 M 6,214,052 E 6,378,690	R \$ 3,316,098 M 4,027,544 E 3,837,000	R \$ 919,034 M 1,864,612 E 1,094,019	R \$ 105,046 M 320,332 E 321,884	R \$ 44,282,472 M 62,671,686 E 54,940,265
<u>TOTAL</u>	\$105,778,569	\$ 21,941,527	\$ 18,368,758	\$ 11,180,642	\$3,877,665	\$ 747,262	\$ 161,894,423

OTB 1979 YEAR END STATISTICS  
YONKERS HANDLE

(REGULAR, MULTIPLE AND EXOTIC WAGERING)

	New York City	Nassau	Suffolk	Catskill	Capital	Western Region	Total Corporation
<u>MEET</u> (1/1-1/20)	R \$ 3,383,454 M 6,172,922 E 4,588,665	\$ 812,064 1,034,726 918,744	\$ 639,688 817,278 737,406	\$ 354,594 514,184 445,662	\$ 162,478 370,650 221,874	\$ 28,338 116,908 103,839	\$ 5,380,596 9,026,668 7,016,190
<u>MEET</u> (3/12-4/21)	R \$ 3,551,552 M 6,302,946 E 5,249,352	\$ 2,012,754 2,474,000 2,323,251	\$ 1,490,772 1,793,332 1,796,925	\$ 834,654 1,182,960 1,098,819	\$ 597,824 1,274,614 666,606	\$ 20,760 37,800 66,984	\$ 8,508,286 13,085,652 11,201,937
<u>MEET</u> (6/4-7/14)	R \$ 5,057,666 M 9,108,812 E 7,040,106	\$ 1,618,314 1,953,802 1,721,685	\$ 1,251,764 1,528,496 1,447,350	\$ 569,442 786,304 700,287	No Wagering ----- -----	No Wagering ----- -----	\$ 8,497,186 13,377,414 10,909,428
<u>MEET</u> (8/23-10/17)	R \$ 6,828,132 M 12,094,316 E 9,724,374	\$ 2,171,220 2,822,128 2,374,491	\$ 1,705,274 2,075,040 1,939,056	\$ 834,360 1,189,962 1,092,681	No Wagering ----- -----	\$ 16,409 64,342 65,938	\$ 11,555,395 18,025,788 15,196,540
<u>MEET</u> (12/10-12/31)	R \$ 2,989,752 M 5,512,968 E 4,361,199	\$ 893,556 1,118,774 1,009,257	\$ 663,464 855,264 793,818	\$ 362,904 545,946 492,018	\$ 123,688 300,488 203,800	\$ 28,167 83,856 85,319	\$ 5,061,531 8,417,296 6,945,411
<u>TOTAL ALL YONKERS MEET</u>	R \$ 21,810,506 M 39,191,964 E 30,963,696	\$ 7,507,908 9,203,430 8,347,428	\$ 55,750,962 7,069,410 6,714,555	\$ 2,955,954 4,199,356 3,829,467	\$ 883,990 1,945,752 1,092,280	\$ 93,674 322,906 322,080	\$ 39,002,994 61,932,618 51,269,506
<u>TOTAL</u>	\$ 91,966,166	\$ 25,058,766	\$ 19,534,927	\$ 10,984,777	\$ 3,922,022	\$ 738,660	\$ 152,205,318



(REGULAR, MULTIPLE AND EXOTIC WAGERING)

OTB 1979 YEAR END STATISTICS  
MONTICELLO HANDLE AND VERNON DOWNS HANDLE

		New York City	Nassau	Suffolk	Catskill	Capital	Western Region	Total Corporation
<u>Monticello</u>								
<u>MEET</u>								
<u>(4/19-9/30)</u>								
R		\$ 2,690,794	\$ 463,362	\$ 393,118	\$ 918,970	\$ 44,359	\$ 23,821	\$ 4,534,424
M		4,702,032	625,156	466,426	1,036,110	68,543	66,729	6,964,996
E		3,804,504	582,480	480,621	955,086	66,065	98,898	5,987,654
TOTAL		\$11,197,330	\$1,670,998	\$1,340,165	\$2,910,166	\$178,967	\$189,448	\$17,487,074

		New York City	Nassau	Suffolk	Catskill	Capital	Western Region	Total Corporation
<u>Vernon Downs</u>								
<u>MEET</u>								
<u>(4/18-10/27)</u>								
R	No Wagering		No Wagering	No Wagering	\$ 48,964	\$ 408,524	\$ 354,748	\$ 812,236
M	No Wagering		No Wagering	No Wagering	48,062	730,812	745,138	1,524,012
E	No Wagering		No Wagering	No Wagering	34,386	678,260	695,733	1,408,379
TOTAL					\$ 131,412	\$1,817,596	\$1,795,619	\$3,744,627

(REGULAR, MULTIPLE AND EXOTIC WAGERING)  
 OTB 1979 YEAR END STATISTICS  
 OUT-OF-STATE HANDLE

		<u>New York City</u>	<u>Nassau</u>	<u>Suffolk</u>	<u>Catskill</u>	<u>Capital</u>	<u>Western Region</u>	<u>Total</u>
Caldex	R	\$ 1,123,713	\$ 288,865	\$ 109,058	\$ 59,875	\$ 117,963	\$ 183,926	\$ 1,723,400
	M	1,910,983	181,193	157,340	94,984	171,268	299,839	2,815,607
	E	832,870	92,732	75,342	53,928	72,298	148,658	1,275,828
Hialeah	R	\$ 1,217,428	\$ 195,405	\$ 127,979	\$ 74,309	\$ 126,823	\$ 143,826	\$ 1,885,770
	M	1,820,046	240,806	154,822	100,344	161,862	223,303	2,701,183
	E	537,488	83,532	63,436	40,022	59,868	104,906	889,252
Keystone	R	\$ 4,803,842	\$ 605,324	\$ 438,963	\$ 284,289	\$ 401,510	\$ 396,002	\$ 6,929,930
	M	6,884,932	704,529	489,663	337,069	498,995	634,250	9,549,438
	E	2,376,326	282,226	214,860	146,124	176,526	283,218	3,479,280
Gulfstream	R	\$ 3,452,914	\$ 302,625	\$ 230,747	\$ 161,955	\$ 289,578	\$ 370,987	\$ 4,808,806
	M	5,101,712	406,173	291,267	232,489	400,448	620,180	7,052,269
	E	1,265,278	116,160	95,570	75,682	122,208	255,928	1,930,826
Pimlico	R	\$ 1,583,037	\$ 144,490	\$ 125,071	\$ 68,788	\$ 93,284	\$ 67,080	\$ 2,081,750
	M	2,254,673	177,228	136,741	79,497	110,719	84,861	2,843,718
	E	796,586	73,272	62,100	38,230	50,202	53,942	1,074,332
Delaware Park	R	\$ 2,541,614	\$ 255,346	\$ 224,397	\$ 137,008	\$ 173,651	\$ 135,228	\$ 3,467,344
	M	4,457,252	343,588	283,654	169,898	239,297	201,604	5,695,293
	E	1,391,412	135,050	124,232	75,150	97,234	107,462	1,930,540
Arlington Park	R	\$ 107,861	\$ 9,845	\$ 8,703	\$ 4,578	\$ 7,767	\$ 10,176	\$ 148,930
	M	157,505	14,123	11,464	6,680	9,940	12,090	211,802
	E	80,482	8,530	6,680	4,324	6,382	9,492	115,890
TOTAL TRACKS	R	\$14,830,409	\$1,641,900	\$1,264,918	\$ 790,807	\$1,210,576	\$1,307,325	\$21,045,930
	M	22,587,103	2,067,637	1,524,951	1,020,961	1,592,528	2,076,127	30,869,310
	E	7,280,442	791,502	642,220	433,460	584,718	963,606	10,695,948
TOTAL		\$44,697,954	\$4,501,042	\$3,432,089	\$2,245,223	\$3,387,822	\$4,347,058	\$62,611,168

(REGULAR, MULTIPLE AND EXOTIC)

OTB 1979 YEAR END STATISTICS  
SPECIAL EVENTS HANDLE

	New York City	Nassau	Suffolk	Catskill	Capital	Western Region	Total
Gulfstream (1/24)	R \$ 120,332	\$ 13,141	\$ 12,741	\$ 6,209	\$ 13,156	\$ 18,762	\$ 184,341
	M 188,877	15,884	13,300	7,578	15,029	27,140	237,808
	E 69,282	7,012	7,018	4,145	7,056	16,794	111,308
Gulfstream (2/17)	R \$ 119,957	\$ 16,630	\$ 13,564	\$ 9,878	\$ 5,370	\$ 4,598	\$ 169,997
	M 103,358	10,726	9,362	6,686	3,877	5,936	138,845
	E 112,942	13,374	12,066	8,694	6,322	11,763	165,161
Gulfstream (3/3)	R \$ 159,328	\$ 22,426	\$ 8,009	\$ 12,233	\$ 8,773	\$ 10,950	\$ 221,719
	M 136,695	14,912	6,476	8,193	6,228	8,499	181,003
	E 135,450	17,108	9,016	9,588	6,562	11,909	189,633
Stepping Stone	R \$ 42,880	\$ 6,079	\$ 3,879	\$ 3,670	\$ 3,332	\$ 2,022	\$ 61,862
	M 51,017	5,308	3,269	2,701	1,528	3,485	67,308
	E 50,050	6,482	4,850	3,626	1,672	4,138	70,818
Kentucky Oaks	R \$ 174,294	\$ 3,783	\$ 2,383	\$ 4,583	\$ 6,007	\$ 4,785	\$ 195,835
	M 78,734	7,712	3,305	3,817	2,493	6,347	102,408
	E -----	-----	-----	-----	-----	-----	-----
Kentucky Derby	R \$1,353,607	\$202,497	\$151,612	\$141,744	\$155,889	\$251,381	\$2,256,730
	M 607,117	74,523	44,796	41,229	34,782	85,094	887,541
	E 562,826	76,026	58,248	49,754	34,918	87,923	869,695
Preakness	R \$ 544,408	\$ 61,815	\$ 41,065	\$ 58,302	\$ 43,200	\$ 85,481	\$ 834,271
	M 435,029	61,202	46,504	41,914	30,419	63,988	669,056
	E -----	-----	-----	-----	-----	-----	-----
Washington D.C. International	R \$ 180,851	\$ 30,767	\$ 19,162	\$ 14,533	\$ 14,685	\$ 18,758	\$ 278,756
	M 130,856	17,928	10,101	8,853	8,055	29,093	204,886
	E 142,274	20,372	14,482	11,978	9,026	-----	198,132
TOTAL ALL EVENTS	R \$2,695,657	\$357,138	\$252,415	\$251,152	\$250,412	\$396,737	\$4,203,511
	M 1,690,683	208,195	137,113	120,971	102,411	229,482	2,488,855
	E 1,072,824	140,374	105,680	87,786	65,556	132,527	1,604,747
TOTAL	\$5,459,164	\$705,707	\$495,208	\$459,909	\$418,379	\$758,746	\$8,297,113

OTR 1979 YEAR END STATISTICS  
 HANDLE BY TYPE OF WAGER  
 (THOROUGHbred)

	New York City	Nassau	Suffolk	Catskill	Capital	Western Region	Total Corporation
<u>AQUEDUCT</u>							
Win, Place, Show	\$ 110,808,050	\$ 19,957,148	\$ 15,966,165	\$ 8,465,432	\$ 13,391,883	\$ 13,032,828	\$181,621,506
Daily Double	80,565,371	10,739,467	8,183,430	5,399,814	9,537,552	9,824,714	124,250,348
Exacta	55,785,624	7,485,430	5,576,768	3,377,240	4,840,392	6,328,960	83,374,414
Quinella	37,308,878	5,267,761	4,292,882	2,564,615	3,808,708	5,016,930	58,259,774
Triple	38,432,534	5,820,618	4,718,822	2,861,300	3,881,396	5,741,643	61,456,313
<u>BELMONT</u>							
Win, Place, Show	\$ 68,561,756	\$ 9,691,449	\$ 8,886,845	\$ 4,661,317	\$ 6,908,232	\$ 4,859,469	\$103,569,068
Daily Double	50,061,888	5,676,013	4,683,389	2,869,717	5,104,175	3,437,288	71,832,470
Exacta	31,026,936	3,379,489	2,857,807	1,624,404	2,204,915	1,829,433	42,922,984
Quinella	25,823,927	3,019,800	2,699,187	1,494,151	2,045,520	1,737,586	36,820,171
Triple	22,435,060	2,906,812	2,563,992	1,476,032	2,042,271	2,163,213	33,587,380
<u>SARATOGA</u>							
Win, Place, Show	\$ 18,363,000	\$ 2,724,841	\$ 2,119,886	\$ 1,210,258	\$ 2,343,641	\$ 1,149,300	\$ 27,910,926
Daily Double	13,046,414	1,524,301	1,130,133	739,039	1,905,452	808,859	19,154,198
Exacta	8,930,175	1,030,335	745,770	438,963	689,284	458,475	12,293,002
Quinella	6,308,851	764,836	602,915	349,965	574,068	389,025	8,989,660
Triple	5,361,334	732,386	594,832	357,668	720,252	508,628	8,275,100
<u>TOTAL NYRA</u>							
Win, Place, Show	\$ 197,732,806	\$ 32,373,438	\$ 26,972,896	\$14,337,007	\$ 22,643,756	\$ 19,041,597	\$313,101,500
Daily Double	143,673,673	17,939,781	13,996,952	9,008,570	16,547,179	14,070,861	215,237,016
Exacta	95,742,735	11,875,254	9,180,345	5,440,607	7,734,591	8,616,868	138,590,400
Quinella	69,441,656	9,052,397	7,594,984	4,408,731	6,428,296	7,143,541	104,069,605
Triple	66,228,928	9,459,816	7,877,646	4,695,000	6,643,919	8,413,484	103,318,793
<u>FINGERLAKES</u>							
Win, Place, Show	\$ -----	\$ -----	\$ -----	\$ 250,046	\$ 855,756	\$ 4,722,489	\$ 5,828,291
Daily Double	-----	-----	-----	181,404	1,539,751	8,001,154	9,722,309
Exacta	-----	-----	-----	130,690	405,188	2,887,424	3,423,302
Quinella	2,457,144	241,494	226,838	223,891	448,998	2,908,913	6,507,278
Triple	1,439,312	138,532	126,058	261,677	596,127	4,011,078	6,572,784

(By Track-Meets Combined)

(HARNESSES)

OTE 1979 YEAR END STATISTICS  
HANDLE BY TYPE OF WAGER

	<u>New York City</u>	<u>Nassau</u>	<u>Suffolk</u>	<u>Catskill</u>	<u>Capital</u>	<u>Western Region</u>	<u>Total Corporation</u>
<b>(By Track-Meets Combined)</b>							
<u>Roosevelt Raceway</u>							
Win, place, show	\$27,338,780	\$ 6,827,498	\$5,776,016	\$3,316,098	\$ 919,034	\$ 105,046	\$44,282,472
Daily Double	21,610,652	3,703,914	2,986,216	2,167,452	1,323,532	217,474	32,009,240
Exacta	21,093,074	3,837,506	3,227,836	1,860,092	541,080	102,858	30,662,446
Triple	30,876,126	6,430,554	5,477,913	3,279,417	969,252	305,759	47,339,021
Pic-Four	4,859,937	1,142,055	900,777	557,583	124,767	16,125	7,601,244
<u>Yonkers Raceway</u>							
Win, place, show	\$21,810,506	\$ 7,507,908	\$5,750,962	\$2,955,954	\$ 883,990	\$ 93,674	\$39,002,994
Daily Double	18,556,740	4,106,538	3,142,234	2,131,684	1,334,848	216,734	29,488,778
Exacta	20,635,224	5,096,892	3,927,176	2,067,672	610,904	106,172	32,444,040
Triple	26,663,826	7,174,224	5,786,334	3,276,966	969,679	307,851	44,178,880
Pic-Four	4,299,870	1,173,204	928,221	552,501	122,601	14,229	7,090,626
<u>Monticello Raceway</u>							
Win, place, show	\$ 2,690,794	\$ 463,362	\$ 393,118	\$ 918,970	\$ 44,359	\$ 23,821	\$ 4,534,424
Daily Double	1,859,854	221,986	164,982	515,260	36,392	34,655	2,833,129
Exacta	1,665,410	231,382	158,928	285,850	14,959	15,287	2,371,816
Quinella	1,176,768	171,788	142,516	235,000	17,192	16,787	1,760,051
Triple	3,199,113	486,612	379,365	811,362	43,478	87,963	5,007,893
Pic-Four	605,391	95,868	101,256	143,724	22,587	10,935	979,761
<u>Buffalo Raceway</u>							
Win, place, show	No Wagering	No Wagering	No Wagering	No Wagering	\$ 13,232	\$4,821,998	\$ 4,835,230
Daily Double	-----	-----	-----	-----	18,694	7,546,248	7,564,942
Exacta	-----	-----	-----	-----	7,844	3,371,506	3,379,350
Quinella	-----	-----	-----	-----	-----	110,493	110,493
Triple	-----	-----	-----	-----	8,934	6,318,312	6,327,246
Pic-Three	-----	-----	-----	-----	-----	390,998	390,998
<u>Batavia Downs</u>							
Win, place, show	No Wagering	No Wagering	No Wagering	No Wagering	No Wagering	\$4,562,344	\$ 4,562,344
Daily Double	-----	-----	-----	-----	-----	7,346,436	7,346,436
Exacta	-----	-----	-----	-----	-----	3,930,690	3,930,690
Quinella	-----	-----	-----	-----	-----	-----	-----
Triple	-----	-----	-----	-----	-----	6,374,249	6,374,249
Pic-Three	-----	-----	-----	-----	-----	363,206	363,206



OTB 1979 YEAR END STATISTICS  
HANDLE BY TYPE OF WAGER

(HARNES - CONTINUED)

	<u>New York City</u>	<u>Nassau</u>	<u>Suffolk</u>	<u>Catskill</u>	<u>Capital</u>	<u>Western Region</u>	<u>Total</u>
<u>Saratoga Raceway</u>							
Win, place, show	No Wagering	No Wagering	No Wagering	No Wagering	\$5,271,470	\$ 1,103	\$ 5,272,573
Daily Double	-----	-----	-----	-----	6,488,039	3,505	6,491,544
Quinella	-----	-----	-----	-----	2,466,388	-----	2,466,388
<u>Vernon Downs</u>							
Win, place, show	No wagering	No Wagering	No Wagering	No Wagering	\$ 409,524	\$ 354,748	\$ 812,236
Daily Double	-----	-----	-----	-----	378,488	401,874	809,780
Exacta	-----	-----	-----	-----	352,324	343,264	714,232
Triple	-----	-----	-----	-----	678,260	695,733	1,408,379

OTB 1979 YEAR END STATISTICS  
HANDLE BY TYPE OF WAGER

(OUT-OF-STATE)

	<u>New York City</u>	<u>Nassau</u>	<u>Suffolk</u>	<u>Catskill</u>	<u>Capital</u>	<u>Western Region</u>	<u>Total</u>
<u>Calder</u>							
Win, place, show	\$ 1,123,713	\$ 128,865	\$ 109,058	\$ 59,875	\$ 117,963	\$ 183,926	\$ 1,723,400
Daily Double	446,132	43,576	37,123	25,033	57,264	76,452	685,580
Exacta	544,524	51,477	42,400	25,534	35,612	74,929	774,476
Quinella	920,327	86,140	77,817	44,417	78,392	148,458	1,355,551
Triple	832,870	92,732	75,342	53,928	72,298	148,658	1,275,826
<u>Hialeah</u>							
Win, place, show	\$ 1,217,428	\$ 195,405	\$ 127,979	\$ 74,309	\$ 126,823	\$ 143,826	\$ 1,885,770
Daily Double	365,790	50,346	31,663	25,154	52,202	61,871	587,026
Exacta	524,503	72,075	39,674	29,842	33,439	51,039	750,572
Quinella	929,753	118,385	83,485	45,348	76,221	110,393	1,363,585
Triple	537,488	83,532	63,436	40,022	59,868	104,906	889,252
<u>Keystone</u>							
Win, place, show	\$ 4,803,842	\$ 605,324	\$ 438,963	\$ 284,289	\$ 401,510	\$ 396,002	\$ 6,929,930
Daily Double	1,713,424	180,828	120,946	103,358	177,620	182,136	2,478,312
Exacta	3,619,605	356,736	243,676	154,454	218,361	316,505	4,909,337
Quinella	1,551,903	166,965	125,041	79,257	103,014	135,609	2,161,789
Triple	2,376,326	282,226	214,860	146,124	176,526	283,218	3,479,280
<u>Gulfstream</u>							
Win, place, show	\$ 3,452,914	\$ 302,625	\$ 230,747	\$ 161,955	\$ 289,578	\$ 370,987	\$ 4,808,806
Daily Double	1,138,859	93,041	64,029	62,805	132,827	173,511	1,665,072
Exacta	1,556,662	124,693	83,218	70,695	92,661	152,905	2,080,834
Quinella	2,406,191	188,439	144,020	98,989	174,960	293,764	3,306,363
Triple	1,265,278	116,160	95,570	75,682	122,208	255,928	1,930,826
<u>Fimlico</u>							
Win, place, show	\$ 1,583,037	\$ 144,490	\$ 125,071	\$ 68,788	\$ 93,284	\$ 67,080	\$ 2,081,750
Daily Double	538,160	46,415	34,905	24,763	40,436	22,572	727,251
Exacta	465,416	33,791	25,365	13,718	14,680	14,111	567,081
Quinella	1,231,097	97,022	76,471	41,016	55,602	48,178	1,549,386
Triple	796,586	73,272	62,100	38,230	50,202	53,942	1,074,332
<u>Delaware Park</u>							
Win, place, show	\$ 2,541,614	\$ 255,346	\$ 224,397	\$ 137,008	\$ 173,651	\$ 135,328	\$ 3,467,344
Daily Double	1,071,729	97,209	73,911	51,428	88,566	52,497	1,435,340
Exacta	1,065,558	69,132	58,852	31,093	35,970	41,979	1,302,584
Quinella	2,319,965	177,247	150,891	87,377	114,761	107,128	2,957,369
Triple	1,391,412	135,050	124,232	75,150	97,234	107,462	1,930,540

OTB 1979 YEAR END STATISTICS  
HANDLE BY TYPE OF WAGER

(OUT-OF-STATE - CONTINUED)

	<u>New York City</u>	<u>Nassau</u>	<u>Suffolk</u>	<u>Catskill</u>	<u>Capital</u>	<u>Western Region</u>	<u>Total</u>
<u>Arlington Park</u>							
Win, place, show	\$ 107,861	\$ 9,845	\$ 8,703	\$ 4,578	\$ 7,767	\$ 10,176	\$ 148,930
Daily Double	51,421	4,810	3,852	2,382	4,919	3,866	71,250
Exacta	77,005	6,549	5,529	2,967	3,627	5,634	101,311
Quinella	29,079	2,764	2,083	1,331	1,394	2,590	39,241
Triple	80,482	8,510	6,680	4,324	6,382	9,492	115,890

OTB 1979 COMMISSION & BREAKAGE TO STATE

	<u>New York City</u>	<u>Nassau</u>	<u>Suffolk</u>	<u>Catskill</u>	<u>Capital</u>	<u>Western Region</u>	<u>Total Corporation</u>
<u>COMMISSION:</u>							
Aqueduct	\$ 4,320,556	\$ 658,167	\$ 520,495	\$ 306,578	\$ 467,687	\$ 554,229	\$ 6,827,712
Belmont	2,625,707	329,546	289,883	162,902	242,202	197,561	3,847,801
Saratoga	679,334	89,191	69,026	41,209	82,965	46,630	1,008,355
<u>Total NYRA</u>	\$ 7,625,597	\$ 1,076,904	\$ 879,404	\$ 510,689	\$ 792,854	\$ 798,420	\$ 11,683,868
FingerLakes	\$ 67,751	\$ 6,571	\$ 6,050	\$ 15,710	\$ 50,380	\$ 305,532	\$ 451,994
Roosevelt Raceway	\$ 1,984,064	\$ 414,751	\$ 347,999	\$ 210,908	\$ 68,388	\$ 15,405	\$ 3,041,515
Yonkers Raceway	\$ 1,722,868	\$ 467,654	\$ 368,711	\$ 208,406	\$ 68,910	\$ 15,305	\$ 2,851,854
Monticello Raceway	\$ 210,458	\$ 31,701	\$ 25,694	\$ 54,024	\$ 3,469	\$ 4,251	\$ 329,597
Buffalo Raceway	-----	-----	-----	-----	666	\$ 359,782	\$ 360,448
Batavia Raceway	-----	-----	-----	-----	-----	\$ 360,518	\$ 360,518
Saratoga Raceway	-----	-----	-----	-----	\$ 142,259	\$ 46	\$ 142,305
Vernon Downs	-----	-----	-----	\$ 2,002	\$ 31,741	\$ 31,871	\$ 65,614
Out-of-State (and Special Events)	\$ 718,793	\$ 75,912	\$ 58,158	\$ 40,182	\$ 54,874	\$ 78,425	\$ 1,026,344
<u>Total</u>	\$ 12,329,531	\$ 2,073,493	\$ 1,686,016	\$ 1,041,921	\$ 1,213,541	\$ 1,969,555	\$ 20,314,057
<u>Breakage:</u>	\$ 1,850,627	\$ 285,628	\$ 230,441	\$ 138,082	\$ 203,668	\$ 252,798	\$ 2,961,244
<u>Total to State:</u>	\$ 14,180,158	\$ 2,359,121	\$ 1,916,457	\$ 1,180,003	\$ 1,417,209	\$ 2,222,353	\$ 23,275,301

(Unaudited)  
 OTB 1979 PAYMENTS TO  
 THOROUGHBRED AND HARNESS BREEDER'S FUNDS

	<u>New York City</u>	<u>Nassau</u>	<u>Suffolk</u>	<u>Catskill</u>	<u>Capital</u>	<u>Western Region</u>	<u>Total Corporation</u>
Aqueduct	\$ 968,701	\$ 147,751	\$ 116,214	\$ 68,005	\$ 106,380	\$ 119,835	\$ 1,526,886
Belmont	593,729	74,021	65,073	36,377	54,915	42,081	866,196
Saratoga	156,029	20,330	15,581	9,288	18,698	9,943	229,869
Fingerlakes	\$ 11,689	\$ 1,140	\$ 1,059	\$ 3,143	\$ 11,537	\$ 67,593	\$ 96,161
<u>TOTAL THOROUGHBRED</u>	<u>\$ 1,730,148</u>	<u>\$ 243,242</u>	<u>\$ 197,927</u>	<u>\$ 116,813</u>	<u>\$ 191,530</u>	<u>\$ 239,452</u>	<u>\$ 2,719,112</u>
Roosevelt	\$ 528,893	\$ 109,708	\$ 91,844	\$ 55,903	\$ 19,388	\$ 3,736	\$ 809,472
Yonkers	459,831	125,294	97,675	54,924	19,610	3,693	761,027
Monticello	55,987	8,355	6,701	14,551	895	947	87,436
Buffalo	-----	-----	-----	-----	243	112,798	113,041
Batavia	-----	-----	-----	-----	71,129	112,885	112,885
Saratoga	-----	-----	-----	-----	9,088	23	71,152
Vernon	-----	-----	-----	657	-----	8,978	18,723
<u>TOTAL HARNESS</u>	<u>\$ 1,044,711</u>	<u>\$ 243,357</u>	<u>\$ 196,220</u>	<u>\$ 126,035</u>	<u>\$ 120,353</u>	<u>\$ 243,060</u>	<u>\$ 1,973,736</u>
<u>OUT-OF-STATE</u>	<u>\$ 150,471</u>	<u>\$ 15,620</u>	<u>\$ 11,782</u>	<u>\$ 6,873</u>	<u>\$ 11,418</u>	<u>\$ 15,317</u>	<u>\$ 211,481</u>
<u>TOTAL ALL TRACKS</u>	<u>\$ 2,925,330</u>	<u>\$ 502,219</u>	<u>\$ 405,929</u>	<u>\$ 249,721</u>	<u>\$ 323,301</u>	<u>\$ 497,829</u>	<u>\$ 4,094,329</u>

(Unaudited)

OTA 1979 PURSE PARITY PAYMENTS  
(DUE FROM OTA NYRA WAGERING)

	<u>New York City</u>	<u>NRSSAU</u>	<u>Suffolk</u>	<u>Catskill</u>	<u>Capital</u>	<u>Western Region</u>	<u>Total Corporation</u>
<u>Agueduct</u>							
(1/1 - 5/21)	\$ 1,406,728	\$229,652	\$170,008	\$100,322	\$163,622	\$181,358	\$2,251,690
(10/17 - 12/31)	\$ 1,518,911	\$206,871	\$174,789	\$103,350	\$153,202	\$171,482	\$2,328,605
<u>TOTAL</u>	<u>\$ 2,925,639</u>	<u>\$436,523</u>	<u>\$344,797</u>	<u>\$203,672</u>	<u>\$316,824</u>	<u>\$352,840</u>	<u>\$4,580,295</u>
<u>Belmont</u>							
(5/23 - 7/30)	\$ 852,844	\$105,419	\$ 90,870	\$ 50,309	\$ 75,327	\$ 59,775	\$1,234,544
(8/29 - 10/15)	951,543	\$119,628	\$108,160	\$ 61,067	\$ 94,059	\$ 66,015	\$1,400,472
<u>TOTAL</u>	<u>\$ 1,804,387</u>	<u>\$225,047</u>	<u>\$199,030</u>	<u>\$111,376</u>	<u>\$169,386</u>	<u>\$125,790</u>	<u>\$2,635,016</u>
<u>Saratoga</u>							
(8/1 - 8/27)	\$ 623,315	\$ 81,047	\$ 58,945	\$ 36,910	\$ 74,307	\$ 38,885	\$ 913,409
<u>TOTAL NYRA</u>	<u>\$ 5,353,341</u>	<u>\$742,617</u>	<u>\$602,772</u>	<u>\$351,958</u>	<u>\$560,517</u>	<u>\$517,515</u>	<u>\$8,128,720</u>

SUMMARY

<u>Total Handle</u>		\$1,372,026,710		
Thoroughbred	<u>Regular</u>	\$318,929,791	<u>Multiple</u>	<u>Exotic</u>
Harness		\$103,302,273	\$477,549,910	\$109,891,577
Out-of-State		\$ 21,045,930	\$164,383,355	\$127,061,503
Special Events		\$ 4,203,511	\$ 30,869,310	\$ 10,695,948
		\$447,481,505	\$ 2,488,855	\$ 1,604,747
			<u>\$675,291,430</u>	<u>\$249,253,775</u>
				<u>\$906,371,278</u>
				<u>\$394,747,131</u>
				<u>\$ 62,611,188</u>
				<u>\$ 8,297,113</u>
				<u>\$1,372,026,710</u>

Connecticut OTB Handle

Thoroughbred	<u>Regular</u>	\$ 73,817,384	<u>Exotic</u>	\$ 8,073,906
Harness		\$ 32,265,458		\$ 8,918,819
		\$106,082,842		\$ 16,992,725
				<u>\$123,075,567</u>

Revenue to State

Commission and Breakege	\$23,275,301
Escheat Unclaimed Tickets	5,893,910
New York State OTB Revenue	\$29,169,211
Revenue Connecticut OTB	1,734,870
	<u>\$30,904,081</u>

OFF-TRACK BETTING IN CONNECTICUT

(Conducted on races Run in New York State)

1979

HANDLE AND NEW YORK STATE COMMISSION

<u>DATES</u>	<u>TRACK</u>	<u>O.T.B. HANDLE REGULAR</u>	<u>O.T.B. HANDLE EXOTIC</u>	<u>NEW YORK STATE COMMISSION</u>
<u>New York State Harness</u>				
1/1 - 1/20	Yonkers Raceway	1,484,064	410,867	30,956.50
3/12 - 4/21	Yonkers Raceway	3,341,464	1,024,722	72,888.67
6/4 - 7/14	Yonkers Raceway	2,978,731	840,086	62,627.52
8/23 - 10/17	Yonkers Raceway	3,893,540	1,149,217	83,497.44
12/23 - 12/31	Yonkers Raceway	3,206,753	798,035	64,018.15
	Total Yonkers Raceway	14,904,552	4,222,927	313,988.28
1/22 - 3/10	Roosevelt	3,677,301	1,099,532	79,312.63
4/23 - 6/2	Roosevelt	3,101,674	927,160	66,889.21
7/16 - 8/22	Roosevelt	2,544,861	754,197	54,672.63
10/18 - 12/8	Roosevelt	8,037,070	1,915,003	157,724.94
	Total Roosevelt Raceway	17,360,906	4,695,892	358,599.41
<u>TOTAL NEW YORK STATE HARNESS</u>		<u>32,265,458</u>	<u>8,918,819</u>	<u>672,587.69</u>
<u>New York State Flat</u>				
<u>New York Racing Association</u>				
1/1 - 5/21	Aqueduct Race Track	26,905,341	3,077,014	391,346.19
10/17 12/31	Aqueduct Race Track	19,622,827	2,022,412	278,545.87
	Total Aqueduct Race Track	46,528,168	5,099,426	669,892.06
5/23 - 7/30	Belmont Park	13,108,168	1,450,464	189,154.22
8/29 - 10/15	Belmont Park	8,701,589	980,490	126,112.67
	Total Belmont Park	21,809,757	2,430,954	315,266.89
8/1 - 8/27	Saratoga Race Track	5,479,459	543,526	77,123.36
<u>TOTAL NEW YORK STATE FLAT</u>		<u>73,817,384</u>	<u>8,073,906</u>	<u>1,062,282.31</u>
<u>TOTAL NEW YORK STATE HARNESS &amp; FLAT</u>		<u>106,082,842</u>	<u>16,992,725</u>	<u>1,734,870.00</u>
<u>TOTAL HANDLE - REGULAR AND EXOTIC</u>		<u>123,075,567</u>		
<u>TOTAL NEW YORK STATE REVENUE</u>				<u>1,734,870.00</u>





## **RACING AND WAGERING BOARD**

**John Van Lindt**  
Chairman

**Bertram D. Sarafan**  
Member

**Dr. Joseph C. O'Dea**  
Member

**Richard F. Corbisiero, Jr.**  
Executive Director

<b>Dean Alfange</b>	– Director of Quarter Horse Racing
<b>Kenneth Beh</b>	– Director of Public Relations
<b>Victor A. Coccoziello</b>	– Director of Wagering Systems
<b>Dominic Coppotelli</b>	– Director of Bingo
<b>Salvatore Curiale</b>	– Counsel
<b>John M. Dailey</b>	– Director of Planning & Policy
<b>Thomas C. Davide</b>	– Secretary to the Board
<b>Bernard Golar</b>	– Chief of Off-Track Betting
<b>Lawrence L. Hassell</b>	– Director of Personnel
<b>Jacob Iberger</b>	– Chief of Racing Operations
<b>Norman F. Lewis, D.V.M.</b>	– Chief Racing Veterinarian